



**ELECTRONIC COPY**

LG743544164  
Report verification at igi.org



October 30, 2025  
IGI Report Number **LG743544164**  
Description **LABORATORY GROWN DIAMOND**  
Shape and Cutting Style **SQUARE CUSHION MODIFIED BRILLIANT**

Measurements **7.67 X 7.63 X 4.95 MM**

**GRADING RESULTS**

Carat Weight **2.57 CARATS**  
Color Grade **FANCY YELLOW**  
Clarity Grade **VVS 2**

October 30, 2025  
IGI Report Number **LG743544164**  
Description **LABORATORY GROWN DIAMOND**  
Shape and Cutting Style **SQUARE CUSHION MODIFIED BRILLIANT**  
Measurements **7.67 X 7.63 X 4.95 MM**

**GRADING RESULTS**

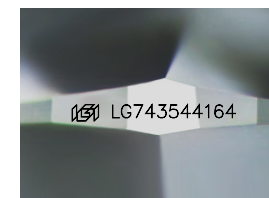
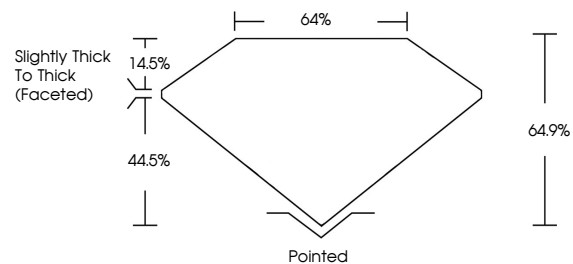
Carat Weight **2.57 CARATS**  
Color Grade **FANCY YELLOW**  
Clarity Grade **VVS 2**

**ADDITIONAL GRADING INFORMATION**

Polish **EXCELLENT**  
Symmetry **EXCELLENT**  
Fluorescence **NONE**  
Inscription(s) **IGI LG743544164**

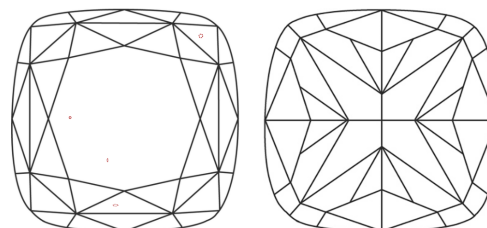
Comments: This Laboratory Grown Diamond was created by Chemical Vapor Deposition (CVD) growth process.

**PROPORTIONS**



Sample Image Used

**CLARITY CHARACTERISTICS**



**KEY TO SYMBOLS**

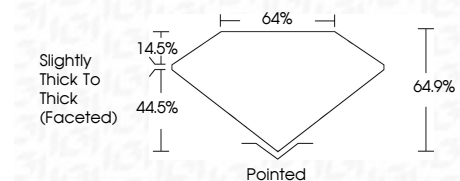
Red symbols indicate internal characteristics.  
Green symbols indicate external characteristics.

**COLOR**

D E F G H I J Faint Very Light Light

**CLARITY**

FL	IF	VVS <sup>1-2</sup>	VS <sup>1-2</sup>	SI <sup>1-2</sup>	I <sup>1-3</sup>
Flawless	Internally Flawless	Very Very Slightly Included	Very Slightly Included	Slightly Included	Included



**ADDITIONAL GRADING INFORMATION**

Polish **EXCELLENT**  
Symmetry **EXCELLENT**  
Fluorescence **NONE**  
Inscription(s) **IGI LG743544164**  
Comments: This Laboratory Grown Diamond was created by Chemical Vapor Deposition (CVD) growth process.



October 30, 2025  
IGI Report No **LG743544164**  
**SQUARE CUSHION MODIFIED BRILLIANT**

**7.67 X 7.63 X 4.95 MM**

Carat Weight **2.57 CARATS**  
Color Grade **FANCY YELLOW**  
Clarity Grade **VVS 2**  
Table **64.9%**  
Girdle **44%**  
Slightly Thick To Thick (Faceted)

Culet **Pointed**  
Polish **EXCELLENT**  
Symmetry **EXCELLENT**  
Fluorescence **NONE**  
Inscription(s) **IGI LG743544164**

Comments: This Laboratory Grown Diamond was created by Chemical Vapor Deposition (CVD) growth process.