

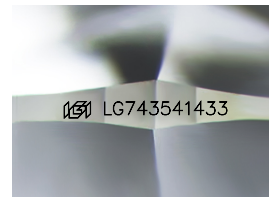
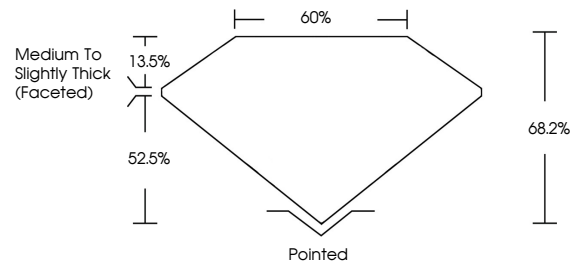


**INTERNATIONAL  
GEMOLOGICAL  
INSTITUTE**

**ELECTRONIC COPY**

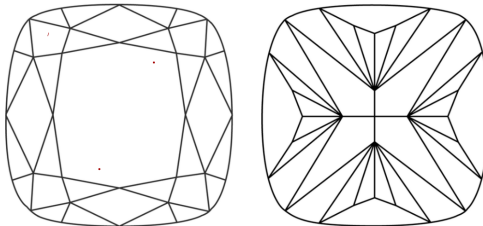
LG743541433  
Report verification at [igi.org](https://igi.org)

## PROPORTIONS



Sample Image Used

## CLARITY CHARACTERISTICS



## KEY TO SYMBOLS

Red symbols indicate internal characteristics.  
Green symbols indicate external characteristics.

## COLOR

D E F G H I J Faint Very Light Light

## CLARITY

FL	IF	VVS <sup>1-2</sup>	VS <sup>1-2</sup>	SI <sup>1-2</sup>	I <sup>1-3</sup>
Flawless	Internally Flawless	Very Very Slightly Included	Very Slightly Included	Slightly Included	Included

© IGI 2020, International Gemological Institute

FD - 10 20

**www.igi.org**

THIS DOCUMENT WAS PRODUCED WITH THE FOLLOWING SECURITY MEASURES: SPECIAL DOCUMENT PAPER, INK SCREENS, WATERMARK, BACKGROUND DESIGNS, HOLOGRAM AND OTHER SECURITY FEATURES NOT LISTED AND DO EXCEED DOCUMENT SECURITY INDUSTRY GUIDELINES.

LABORATORY GROWN DIAMOND REPORT



October 16, 2025

IGI Report Number **LG743541433**

Description	LABORATORY GROWN DIAMOND
-------------	--------------------------

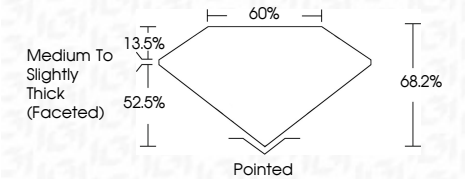
Shape and Cutting Style **SQUARE CUSHION MODIFIED  
BRILLIANT**

Measurements 10.16 X 9.94 X 6.78 MM

## GRADING RESULTS

Carat Weight **5.09 CARATS**

Color Grade	F
-------------	---

Clarity Grade **VVS 2**

### ADDITIONAL GRADING INFORMATION

Polish **EXCELLENT**Symmetry **EXCELLENT**Fluorescence **NONE**Inscription(s)  LG743541433

Comments: This Laboratory Grown Diamond was created by Chemical Vapor Deposition (CVD) growth process.  
Type IIa



IGI



October 16, 2025	IGI Report No LG743541433		SQUARE CLUSION MODIFIED BRILLIANT	
10.16 X 9.94 X 0.78 MM	Color Weight	5.09 CARATS	VVS 2	68.2%
Carat Weight	Color Grade		60%	
			Medium to Slightly Thick (facetted)	
	Clarity Grade		Polished	
Depth	Table		EXCELLENT	
Girdle			EXCELLENT	
Culet	Polish			
Symmetry	Fluorescence			
Inscriptions	Inscriptions		NONE	1691 LG743541433
Comments:				
This Laboratory Grown Diamond was created by Chemical Vapor Deposition (CVD) Growth Process.				
Type Ila				

This Laboratory Grown Diamond was created by Chemical Vapor Deposition (CVD) growth process.  
Type IIa