



ELECTRONIC COPY

LABORATORY GROWN DIAMOND REPORT

October 15, 2025	
IGI Report Number	LG743540906
Description	LABORATORY GROWN DIAMOND
Shape and Cutting Style	ROUND BRILLIANT
Measurements	7.91 - 7.95 X 4.83 MM

GRADING RESULTS

Carat Weight	1.87 CARAT
Color Grade	E
Clarity Grade	VVS 2
Cut Grade	IDEAL

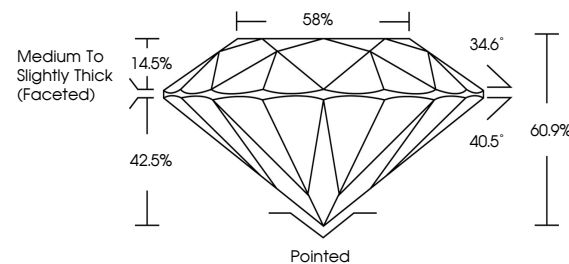
ADDITIONAL GRADING INFORMATION

Polish	EXCELLENT
Symmetry	EXCELLENT
Fluorescence	NONE
Inscription(s)	 LG743540906

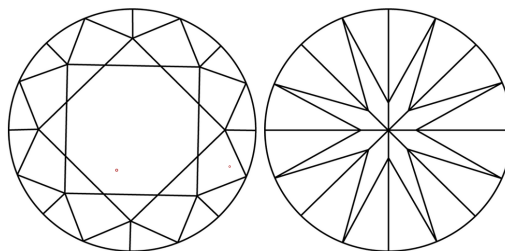
Comments: This Laboratory Grown Diamond was created by Chemical Vapor Deposition (CVD) growth process.
Type IIa

LG743540906
Report verification at igi.org

PROPORTIONS

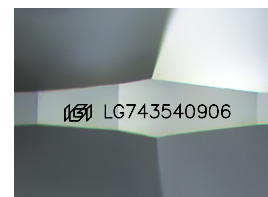


CLARITY CHARACTERISTICS



KEY TO SYMBOLS

Red symbols indicate internal characteristics.
Green symbols indicate external characteristics.



Sample Image Used

COLOR

D E F G H I J Faint Very Light Light

CLARITY

FL	IF	VVS ¹⁻²	VS ¹⁻²	SI ¹⁻²	I ¹⁻³
Flawless	Internally Flawless	Very Very Slightly Included	Very Slightly Included	Slightly Included	Included

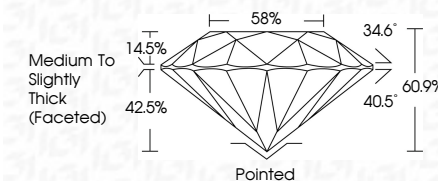
LABORATORY GROWN DIAMOND REPORT



October 15, 2025	
IGI Report Number	LG743540906
Description	LABORATORY GROWN DIAMOND
Shape and Cutting Style	ROUND BRILLIANT
Measurements	7.91 - 7.95 X 4.83 MM

GRADING RESULTS

Carat Weight	1.87 CARAT
Color Grade	E
Clarity Grade	VVS 2
Cut Grade	IDEAL



ADDITIONAL GRADING INFORMATION

Polish	EXCELLENT
Symmetry	EXCELLENT
Fluorescence	NONE
Inscription(s)	(L) LG743540906
<p>Comments: This Laboratory Grown Diamond was created by Chemical Vapor Deposition (CVD) growth process.</p> <p>Type IIa</p>	



© IGI 2020, International Gemological Institute

FD - 10 20



THIS DOCUMENT WAS PRODUCED WITH THE FOLLOWING SECURITY MEASURES: SPECIAL DOCUMENT PAPER, INK SCREENS, WATERMARK, BACKGROUND DESIGNS, HOLOGRAM AND OTHER SECURITY FEATURES NOT LISTED AND DO EXCEED DOCUMENT SECURITY INDUSTRY GUIDELINES

www.igi.org

October 15, 2025
GI Report No LG743540906
ROUND BRILLIANT

1.87 CARAT	1.87 CARAT
WVS 2	WVS 2
IDPAL	IDPAL
60.9%	60.9%
58%	58%
Medium to Slightly Thick (Faceted)	Medium to Slightly Thick (Faceted)
Pointed	Pointed
EXCELLENT	EXCELLENT
EXCELLENT	EXCELLENT
NONE	NONE
4mm / 27.85mm	4mm / 27.85mm

Comments:
This Laboratory Grown Diamond was created by Chemical Vapor Deposition (CVD) growth process.