



ELECTRONIC COPY

LG743538291
Report verification at igi.org



October 15, 2025

IGI Report Number **LG743538291**

Description **LABORATORY GROWN DIAMOND**

Shape and Cutting Style **CUT CORNERED
RECTANGULAR MODIFIED
BRILLIANT**

Measurements **9.74 X 7.04 X 4.56 MM**

GRADING RESULTS

Carat Weight **2.69 CARATS**

Color Grade **D**

Clarity Grade **VVS 1**

LABORATORY GROWN DIAMOND REPORT

October 15, 2025

IGI Report Number **LG743538291**

Description **LABORATORY GROWN DIAMOND**

Shape and Cutting Style **CUT CORNERED RECTANGULAR
MODIFIED BRILLIANT**

Measurements **9.74 X 7.04 X 4.56 MM**

GRADING RESULTS

Carat Weight **2.69 CARATS**

Color Grade **D**

Clarity Grade **VVS 1**

ADDITIONAL GRADING INFORMATION

Polish **EXCELLENT**

Symmetry **EXCELLENT**

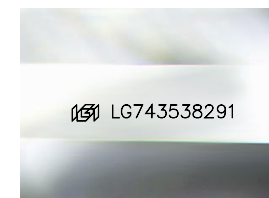
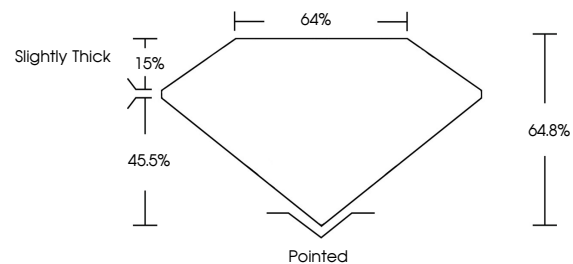
Fluorescence **NONE**

Inscription(s) **IGI LG743538291**

Comments: As Grown - No indication of post-growth treatment.

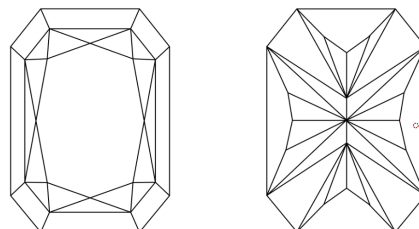
This Laboratory Grown Diamond was created by High Pressure High Temperature (HPHT) growth process. Type II

PROPORTIONS



Sample Image Used

CLARITY CHARACTERISTICS



KEY TO SYMBOLS

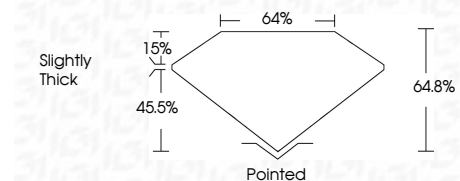
Red symbols indicate internal characteristics.
Green symbols indicate external characteristics.

COLOR

D E F G H I J Faint Very Light Light

CLARITY

FL	IF	VVS ¹⁻²	VS ¹⁻²	SI ¹⁻²	I ¹⁻³
Flawless	Internally Flawless	Very Very Slightly Included	Very Slightly Included	Slightly Included	Included



ADDITIONAL GRADING INFORMATION

Polish **EXCELLENT**

Symmetry **EXCELLENT**

Fluorescence **NONE**

Inscription(s) **IGI LG743538291**

Comments: As Grown - No indication of post-growth treatment.

This Laboratory Grown Diamond was created by High Pressure High Temperature (HPHT) growth process. Type II



IGI



October 15, 2025	IGI Report No LG743538291	CUT CORNERED RECT. MODIFIED BRILLIANT	9.74 X 7.04 X 4.56 MM	2.69 CARATS	D	VVS 1	64.8% 45.5%	Slightly Thick	Pointed	EXCELLENT	EXCELLENT	NONE	IGI LG743538291
<p>Comments: As Grown - No indication of post-growth treatment. This Laboratory Grown Diamond was created by High Pressure High Temperature (HPHT) growth process. Type II</p>													