



ELECTRONIC COPY

LG743532829
Report verification at igi.org



October 16, 2025

IGI Report Number **LG743532829**

Description **LABORATORY GROWN DIAMOND**

Shape and Cutting Style **ROUND MODIFIED BRILLIANT**

Measurements **6.86 - 6.88 X 4.23 MM**

GRADING RESULTS

Carat Weight **1.23 CARAT**

Color Grade **E**

Clarity Grade **VVS 2**

October 16, 2025

IGI Report Number **LG743532829**

Description **LABORATORY GROWN DIAMOND**

Shape and Cutting Style **ROUND MODIFIED BRILLIANT**

Measurements **6.86 - 6.88 X 4.23 MM**

GRADING RESULTS

Carat Weight **1.23 CARAT**

Color Grade **E**

Clarity Grade **VVS 2**

ADDITIONAL GRADING INFORMATION

Polish **EXCELLENT**

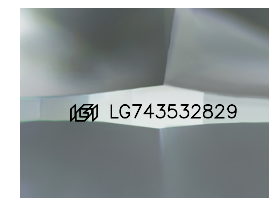
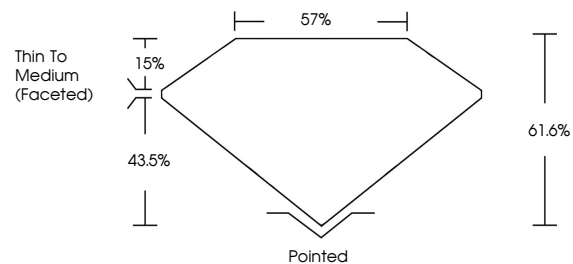
Symmetry **EXCELLENT**

Fluorescence **NONE**

Inscription(s) **IGI LG743532829**

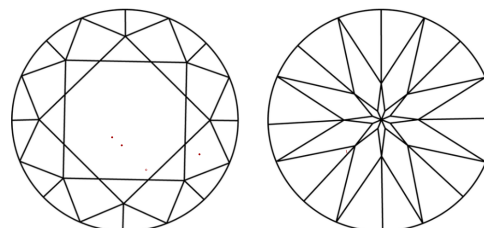
Comments: This Laboratory Grown Diamond was created by Chemical Vapor Deposition (CVD) growth process. Type IIa

PROPORTIONS



Sample Image Used

CLARITY CHARACTERISTICS



KEY TO SYMBOLS

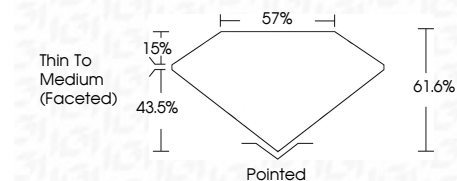
Red symbols indicate internal characteristics.
Green symbols indicate external characteristics.

COLOR

D E F G H I J Faint Very Light Light

CLARITY

FL	IF	VVS ¹⁻²	VS ¹⁻²	SI ¹⁻²	I ¹⁻³
Flawless	Internally Flawless	Very Very Slightly Included	Very Slightly Included	Slightly Included	Included



ADDITIONAL GRADING INFORMATION

Polish **EXCELLENT**

Symmetry **EXCELLENT**

Fluorescence **NONE**

Inscription(s) **IGI LG743532829**

Comments: This Laboratory Grown Diamond was created by Chemical Vapor Deposition (CVD) growth process. Type IIa



October 16, 2025	1.23 CARAT	E	VVS 2	61.6%	57%	Thin To Medium (Faceted)	Pointed	EXCELLENT	EXCELLENT	NONE	IGI LG743532829
IGI Report No LG743532829	Carat Weight	Color Grade	Clarity Grade	Depth	Table	Girdle	Culet	Polish	Symmetry	Fluorescence	Inscription(s)
ROUND MODIFIED BRILLIANT	6.86 - 6.88 X 4.23 MM	E	VVS 2	61.6%	57%	Thin To Medium (Faceted)	Pointed	EXCELLENT	EXCELLENT	NONE	IGI LG743532829

Comments: This Laboratory Grown Diamond was created by Chemical Vapor Deposition (CVD) growth process. Type IIa