



ELECTRONIC COPY

LG743531587
Report verification at igi.org



October 16, 2025

IGI Report Number **LG743531587**

Description **LABORATORY GROWN DIAMOND**

Shape and Cutting Style **OVAL BRILLIANT**

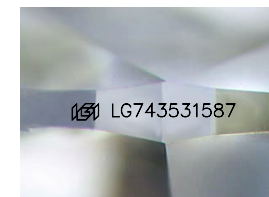
Measurements **11.31 X 8.24 X 5.21 MM**

GRADING RESULTS

Carat Weight **3.09 CARATS**

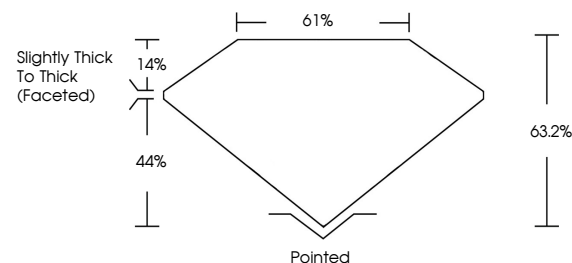
Color Grade **E**

Clarity Grade **VVS 2**

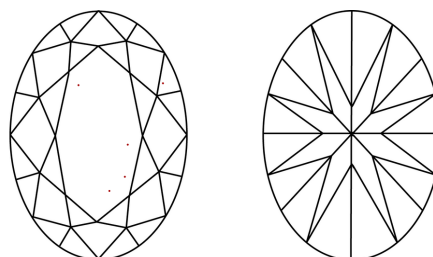


Sample Image Used

PROPORTIONS



CLARITY CHARACTERISTICS



KEY TO SYMBOLS

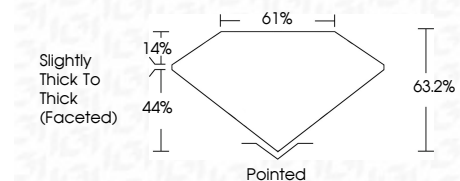
Red symbols indicate internal characteristics.
Green symbols indicate external characteristics.

COLOR

D E F G H I J Faint Very Light Light

CLARITY

FL	IF	VS ¹⁻²	VS ¹⁻²	SI ¹⁻²	I ¹⁻³
Flawless	Internally Flawless	Very Very Slightly Included	Very Slightly Included	Slightly Included	Included



ADDITIONAL GRADING INFORMATION

Polish **EXCELLENT**

Symmetry **EXCELLENT**

Fluorescence **NONE**

Inscription(s) **IGI LG743531587**

Comments: This Laboratory Grown Diamond was created by Chemical Vapor Deposition (CVD) growth process. Type IIa



IGI



October 16, 2025	IGI Report No LG743531587	3.09 CARATS	E
OVAL BRILLIANT	11.31 X 8.24 X 5.21 MM	VVS 2	63.2%
Carat Weight	Color Grade	Clarity Grade	Depth
3.09	E	VVS 2	63.2%
11.31	8.24	5.21	MM
Table	Girdle	Slightly Thick To Thick (Faceted)	Pointed
61%			EXCELLENT
			EXCELLENT
			NONE
			IGI LG743531587

Comments: This Laboratory Grown Diamond was created by Chemical Vapor Deposition (CVD) growth process. Type IIa