



**ELECTRONIC COPY**

LG743523333  
Report verification at igi.org



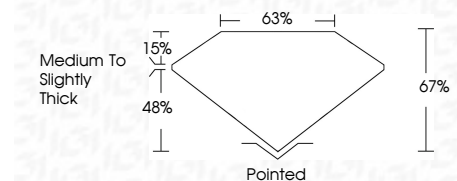
October 15, 2025  
IGI Report Number **LG743523333**  
Description **LABORATORY GROWN DIAMOND**

Shape and Cutting Style **CUT CORNERED  
RECTANGULAR MODIFIED  
BRILLIANT**

Measurements **7.68 X 5.25 X 3.52 MM**

**GRADING RESULTS**

Carat Weight **1.23 CARAT**  
Color Grade **E**  
Clarity Grade **INTERNALLY FLAWLESS**



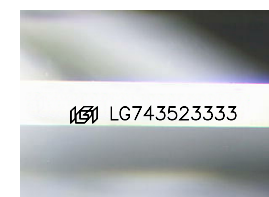
**ADDITIONAL GRADING INFORMATION**

Polish **EXCELLENT**  
Symmetry **EXCELLENT**  
Fluorescence **NONE**

Inscription(s) **IGI LG743523333**  
Comments: As Grown - No indication of post-growth treatment.  
This Laboratory Grown Diamond was created by High Pressure High Temperature (HPHT) growth process. Type II

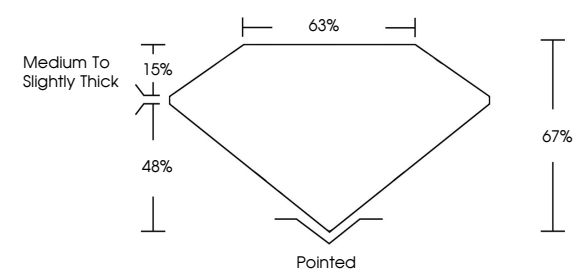


October 15, 2025  
IGI Report No **LG743523333**  
**CUT CORNERED RECT. MODIFIED BRILLIANT**  
7.68 X 5.25 X 3.52 MM  
Carat Weight **1.23 CARAT**  
Color Grade **E**  
Clarity Grade **IF**  
Depth **48%**  
Table **63%**  
Girdle **Medium to Slightly Thick**  
Culet **Pointed**  
Polish **EXCELLENT**  
Symmetry **EXCELLENT**  
Fluorescence **NONE**  
Inscription(s) **IGI LG743523333**  
Comments: As Grown - No indication of post-growth treatment.  
This Laboratory Grown Diamond was created by High Pressure High Temperature (HPHT) growth process. Type II

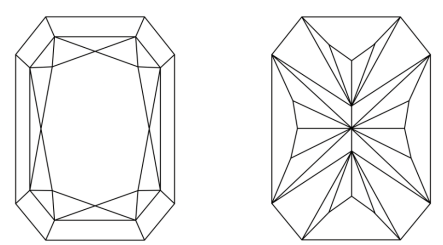


Sample Image Used

**PROPORTIONS**



**CLARITY CHARACTERISTICS**



**KEY TO SYMBOLS**

Red symbols indicate internal characteristics.  
Green symbols indicate external characteristics.

**COLOR**

D E F G H I J Faint Very Light Light

**CLARITY**

FL	IF	VS <sup>1-2</sup>	VS <sup>1-2</sup>	SI <sup>1-2</sup>	I <sup>1-3</sup>
Flawless	Internally Flawless	Very Very Slightly Included	Very Slightly Included	Slightly Included	Included

