



LABORATORY GROWN DIAMOND REPORT

November 6, 2025
 IGI Report Number **LG743523186**
 Description **LABORATORY GROWN DIAMOND**
 Shape and Cutting Style **PEAR BRILLIANT**
 Measurements **6.91 X 4.36 X 2.85 MM**

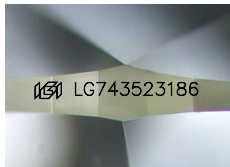
GRADING RESULTS

Carat Weight **0.59 CARAT**
 Color Grade **FANCY YELLOW**
 Clarity Grade **VVS 2**

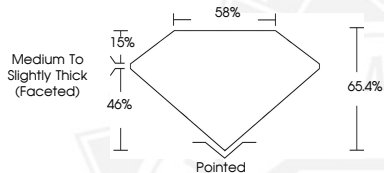
ADDITIONAL GRADING INFORMATION

Polish **VERY GOOD**
 Symmetry **VERY GOOD**
 Fluorescence **NONE**
 Inscription(s) **IGI LG743523186**

Comments: This Laboratory Grown Diamond was created by Chemical Vapor Deposition (CVD) growth process.



Sample Image Used



November 6, 2025
 IGI Report Number **LG743523186**
PEAR BRILLIANT
LABORATORY GROWN DIAMOND
6.91 X 4.36 X 2.85 MM
 Carat Weight **0.59 CARAT**
 Color Grade **FANCY YELLOW**
 Clarity Grade **VVS 2**
 Polish **VERY GOOD**
 Symmetry **VERY GOOD**
 Fluorescence **NONE**
 Inscription(s) **IGI LG743523186**

Comments: This Laboratory Grown Diamond was created by Chemical Vapor Deposition (CVD) growth process.



November 6, 2025
 IGI Report Number **LG743523186**
PEAR BRILLIANT
LABORATORY GROWN DIAMOND
6.91 X 4.36 X 2.85 MM
 Carat Weight **0.59 CARAT**
 Color Grade **FANCY YELLOW**
 Clarity Grade **VVS 2**
 Polish **VERY GOOD**
 Symmetry **VERY GOOD**
 Fluorescence **NONE**
 Inscription(s) **IGI LG743523186**

Comments: This Laboratory Grown Diamond was created by Chemical Vapor Deposition (CVD) growth process.



THIS DOCUMENT WAS PRODUCED WITH THE FOLLOWING SECURITY MEASURES: SPECIAL DOCUMENT PAPER, INK SCREENS, WATERMARK, BACKGROUND DESIGNS, HOLOGRAM AND OTHER SECURITY FEATURES NOT LISTED AND DO EXCEED DOCUMENT SECURITY INDUSTRY GUIDELINES.