



ELECTRONIC COPY

LABORATORY GROWN DIAMOND REPORT

October 17, 2025	
IGI Report Number	LG743518143
Description	LABORATORY GROWN DIAMOND
Shape and Cutting Style	ROUND BRILLIANT
Measurements	9.73 - 9.77 X 6.02 MM

GRADING RESULTS

Carat Weight	3.58 CARATS
Color Grade	E
Clarity Grade	VVS 2
Cut Grade	IDEAL

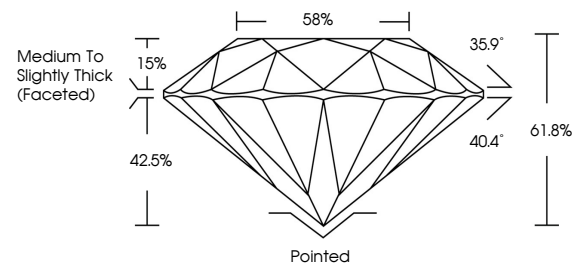
ADDITIONAL GRADING INFORMATION

Polish	EXCELLENT
Symmetry	EXCELLENT
Fluorescence	NONE
Inscription(s)	 LG743518143

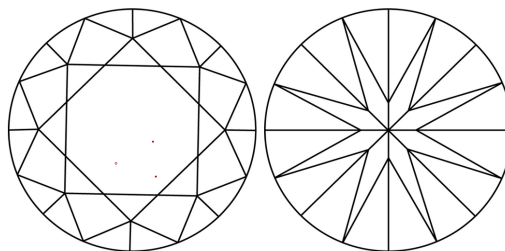
Comments: This Laboratory Grown Diamond was created by Chemical Vapor Deposition (CVD) growth process.
Type IIa

LG743518143
Report verification at igi.org

PROPORTIONS

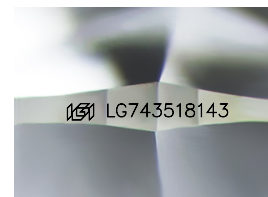


CLARITY CHARACTERISTICS



KEY TO SYMBOLS

Red symbols indicate internal characteristics.
Green symbols indicate external characteristics.



Sample Image Used

COLOR

D E F G H I J Faint Very Light Light

CLARITY

FL IF VWS¹⁻² VS¹⁻² SI¹⁻² |¹⁻³

Flawless	Internally Flawless	Very Very Slightly Included	Very Slightly Included	Slightly Included	Included
----------	---------------------	-----------------------------	------------------------	-------------------	----------

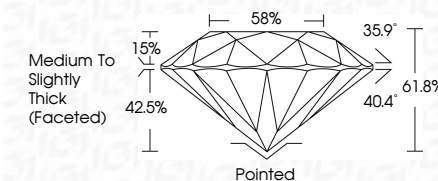
LABORATORY GROWN DIAMOND REPORT



October 17, 2025	
IGI Report Number	LG743518143
Description	LABORATORY GROWN DIAMOND
Shape and Cutting Style	ROUND BRILLIANT
Measurements	9.73 - 9.77 X 6.02 MM

GRADING RESULTS

Carat Weight	3.58 CARATS
Color Grade	E
Clarity Grade	VVS 2
Cut Grade	IDEAL



ADDITIONAL GRADING INFORMATION

Polish	EXCELLENT
Symmetry	EXCELLENT
Fluorescence	NONE
Inscription(s)	 LG743518143
Comments: This Laboratory Grown Diamond was created by Chemical Vapor Deposition (CVD) growth process.	
Type IIa	



© IGI 2020, International Gemological Institute

FD - 10 20



THIS DOCUMENT WAS PRODUCED WITH THE FOLLOWING SECURITY MEASURES: SPECIAL DOCUMENT PAPER, INK SCREENS, WATERMARK, BACKGROUND DESIGNS, HOLOGRAM AND OTHER SECURITY FEATURES NOT LISTED AND DO EXCEED DOCUMENT SECURITY INDUSTRY GUIDELINE

www.igi.org

October 17, 2025	3.58 CARATS	E	VVS 2	Polished	Comments: Created by: Gary Diamond was treated by Chemical Vapor Deposition (CVD) growth process. Type IIa
GI Report No. LG743518143	Color Weight	Clarity Grade	IDEAL	EXCELLENT	
ROUND BRILLIANT	Carat Weight	Cut Grade	61.9%	B	
7.75 - 7.77 X 4.02 MM	Color Grade	Depth	61.9%	EXCELLENT	
		Cut Grade	85%	None	
			Medium to Slightly Thick (Faceted)	1691 LG743518143	
				Cluef	
				Polish	
				Symmetry	
				Fluorescence	
				Inscriptions(s)	