



**INTERNATIONAL
GEMOLOGICAL
INSTITUTE**

ELECTRONIC COPY



October 15, 2025

IGI Report Number **LG743517849**

**ROUND BRILLIANT
LABORATORY GROWN DIAMOND
4.38 - 4.43 X 2.72 MM**

Carat Weight **0.32 CARAT**
Color Grade **E**
Clarity Grade **SI 1**
Cut Grade **IDEAL**
Polish **EXCELLENT**
Symmetry **EXCELLENT**
Fluorescence **NONE**
Inscription(s) **IGI LG743517849**

Comments: This Laboratory Grown Diamond was created by Chemical Vapor Deposition (CVD) growth process. Type IIa

LABORATORY GROWN DIAMOND REPORT

October 15, 2025

IGI Report Number **LG743517849**

Description **LABORATORY GROWN DIAMOND**

Shape and Cutting Style **ROUND BRILLIANT**

Measurements **4.38 - 4.43 X 2.72 MM**

GRADING RESULTS

Carat Weight **0.32 CARAT**

Color Grade **E**

Clarity Grade **SI 1**

Cut Grade **IDEAL**

ADDITIONAL GRADING INFORMATION

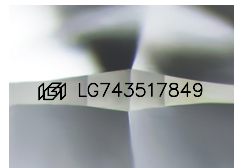
Polish **EXCELLENT**

Symmetry **EXCELLENT**

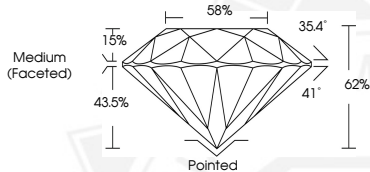
Fluorescence **NONE**

Inscription(s) **IGI LG743517849**

Comments: This Laboratory Grown Diamond was created by Chemical Vapor Deposition (CVD) growth process. Type IIa



Sample Image Used



October 15, 2025

IGI Report Number **LG743517849**

**ROUND BRILLIANT
LABORATORY GROWN DIAMOND
4.38 - 4.43 X 2.72 MM**

Carat Weight **0.32 CARAT**
Color Grade **E**
Clarity Grade **SI 1**
Cut Grade **IDEAL**
Polish **EXCELLENT**
Symmetry **EXCELLENT**
Fluorescence **NONE**
Inscription(s) **IGI LG743517849**

Comments: This Laboratory Grown Diamond was created by Chemical Vapor Deposition (CVD) growth process. Type IIa



THIS DOCUMENT WAS PRODUCED WITH THE FOLLOWING SECURITY MEASURES: SPECIAL DOCUMENT PAPER, INK SCREENS, WATERMARK, BACKGROUND DESIGNS, HOLOGRAM AND OTHER SECURITY FEATURES NOT LISTED AND DO EXCEED DOCUMENT SECURITY INDUSTRY GUIDELINES.

For terms & conditions and to verify this report, please visit www.igi.org