



**INTERNATIONAL  
GEMOLOGICAL  
INSTITUTE**

**ELECTRONIC COPY**



October 29, 2025

IGI Report Number **LG743517661**

**RECTANGULAR CUSHION  
MODIFIED BRILLIANT  
LABORATORY GROWN DIAMOND**  
6.40 X 3.87 X 2.41 MM

Carat Weight **0.56 CARAT**  
Color Grade **FANCY VIVID BLUE**  
Clarity Grade **VS 1**  
Polish **VERY GOOD**  
Symmetry **GOOD**  
Fluorescence **NONE**  
Inscription(s) **IGI LG743517661**

Comments: This Laboratory Grown Diamond was created by Chemical Vapor Deposition (CVD) growth process. Indications of post-growth treatment.

**LABORATORY GROWN DIAMOND REPORT**

October 29, 2025

IGI Report Number

**LG743517661**

Description

**LABORATORY GROWN DIAMOND**

Shape and Cutting Style

**RECTANGULAR CUSHION MODIFIED  
BRILLIANT**

Measurements

**6.40 X 3.87 X 2.41 MM**

**GRADING RESULTS**

Carat Weight

**0.56 CARAT**

Color Grade

**FANCY VIVID BLUE**

Clarity Grade

**VS 1**

**ADDITIONAL GRADING INFORMATION**

Polish

**VERY GOOD**

Symmetry

**GOOD**

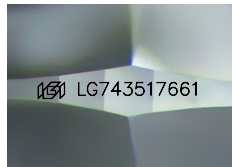
Fluorescence

**NONE**

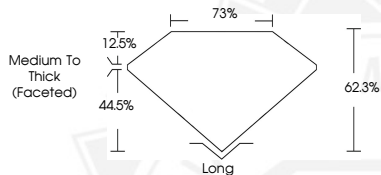
Inscription(s)

**IGI LG743517661**

Comments: This Laboratory Grown Diamond was created by Chemical Vapor Deposition (CVD) growth process. Indications of post-growth treatment.



Sample Image Used



October 29, 2025

IGI Report Number **LG743517661**

**RECTANGULAR CUSHION  
MODIFIED BRILLIANT  
LABORATORY GROWN DIAMOND**  
6.40 X 3.87 X 2.41 MM

Carat Weight **0.56 CARAT**  
Color Grade **FANCY VIVID BLUE**  
Clarity Grade **VS 1**  
Polish **VERY GOOD**  
Symmetry **GOOD**  
Fluorescence **NONE**  
Inscription(s) **IGI LG743517661**

Comments: This Laboratory Grown Diamond was created by Chemical Vapor Deposition (CVD) growth process. Indications of post-growth treatment.



THIS DOCUMENT WAS PRODUCED WITH THE FOLLOWING SECURITY MEASURES: SPECIAL DOCUMENT PAPER, INK SCREENS, WATERMARK, BACKGROUND DESIGNS, HOLOGRAM AND OTHER SECURITY FEATURES NOT LISTED AND DO EXCEED DOCUMENT SECURITY INDUSTRY GUIDELINES.

For terms & conditions and to verify this report, please visit [www.igi.org](http://www.igi.org)