



ELECTRONIC COPY

LABORATORY GROWN DIAMOND REPORT

October 28, 2025	
IGI Report Number	LG743515614
Description	LABORATORY GROWN DIAMOND
Shape and Cutting Style	ROUND BRILLIANT
Measurements	12.38 - 12.45 X 7.45 MM

GRADING RESULTS

Carat Weight	7.02 CARATS
Color Grade	E
Clarity Grade	VVS 2
Cut Grade	IDEAL

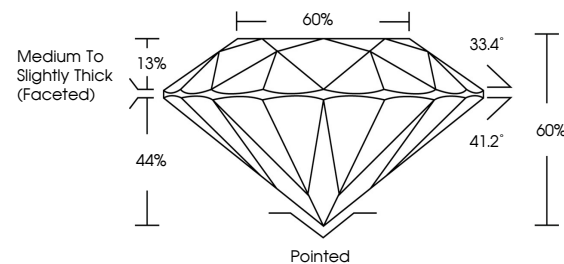
ADDITIONAL GRADING INFORMATION

Polish	EXCELLENT
Symmetry	EXCELLENT
Fluorescence	NONE
Inscription(s)	 LG743515614

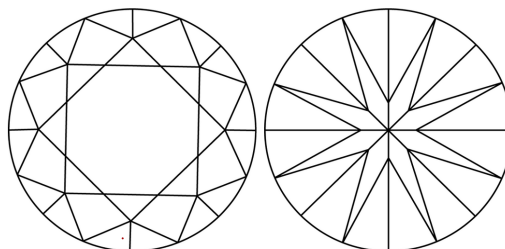
Comments: This Laboratory Grown Diamond was created by Chemical Vapor Deposition (CVD) growth process.
Type IIa

LG743515614
Report verification at lgi.org

PROPORTIONS

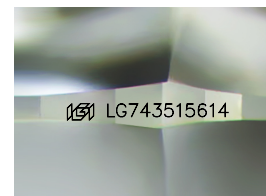


CLARITY CHARACTERISTICS



KEY TO SYMBOLS

Red symbols indicate internal characteristics.
Green symbols indicate external characteristics.



Sample Image Used

COLOR

D E F G H I J Faint Very Light Light

CLARITY

FL	IF	VVS ¹⁻²	VS ¹⁻²	SI ¹⁻²	I ¹⁻³
Flawless	Internally Flawless	Very Very Slightly Included	Very Slightly Included	Slightly Included	Included

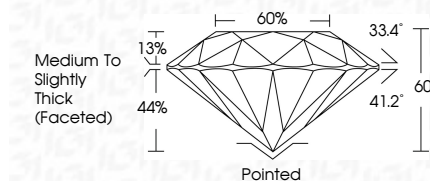
LABORATORY GROWN DIAMOND REPORT



October 28, 2025	
IGI Report Number	LG743515614
Description	LABORATORY GROWN DIAMOND
Shape and Cutting Style	ROUND BRILLIANT
Measurements	12.38 - 12.45 X 7.45 MM

GRADING RESULTS

Carat Weight	7.02 CARATS
Color Grade	E
Clarity Grade	VVS 2
Cut Grade	IDEAL



ADDITIONAL GRADING INFORMATION

Polish	EXCELLENT
Symmetry	EXCELLENT
Fluorescence	NONE
Inscription(s)	LG LG743515614
Comments: This Laboratory Grown Diamond was created by Chemical Vapor Deposition (CVD) growth process. Type IIa	



© IGI 2020, International Gemological Institute

FD - 10 20



THIS DOCUMENT WAS PRODUCED WITH THE FOLLOWING SECURITY MEASURES: SPECIAL DOCUMENT PAPER, INK SCREENS, WATERMARK, BACKGROUND DESIGNS, HOLOGRAM AND OTHER SECURITY FEATURES NOT LISTED AND DO EXCEED DOCUMENT SECURITY INDUSTRY GUIDELINE

www.igi.org

October 28, 2025	7.02 CARATS	E	VVS 2	Polished EXCELLENT EXCELLENT NONE #691 LG74551614
GL Report No. LG74551614		IDEAL	60%	
ROUND BRILLIANT		60%	Medium to Slightly Thick (Fasted)	
21.38 - 12.45 X 7.45 MM	Corat Weight	Color Grade	Clarity Grade	Culet
				Polish
			Car Grade	Symmetry
			Depth	Fluorescence
			Table	Inscriptions(s)
			Girdle	

Comments:
 Natural Fancy Crown Diamond was
 treated by Chemical Vapor Deposition
 (CVD) growth process.
 Type IIa