



ELECTRONIC COPY

LG743515248
Report verification at igi.org



October 14, 2025

IGI Report Number **LG743515248**

Description **LABORATORY GROWN DIAMOND**

Shape and Cutting Style **ROUND BRILLIANT**

Measurements **9.29 - 9.32 X 5.56 MM**

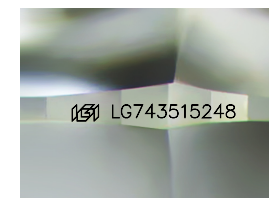
GRADING RESULTS

Carat Weight **3.00 CARATS**

Color Grade **E**

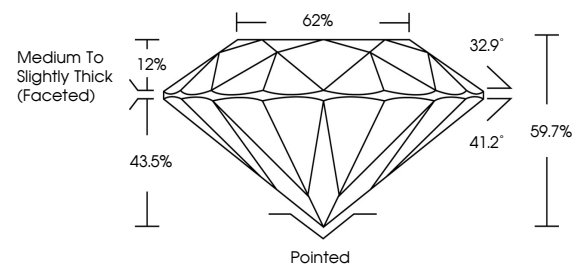
Clarity Grade **VVS 2**

Cut Grade **EXCELLENT**

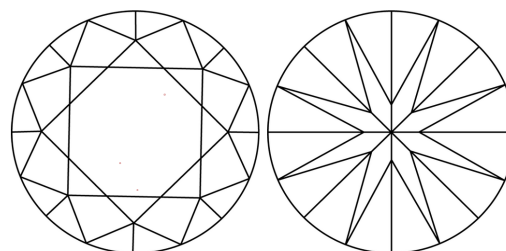


Sample Image Used

PROPORTIONS



CLARITY CHARACTERISTICS



KEY TO SYMBOLS

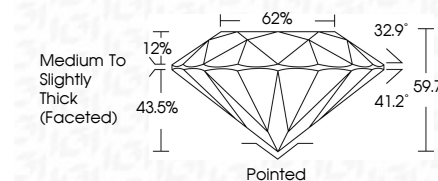
Red symbols indicate internal characteristics.
Green symbols indicate external characteristics.

COLOR

D E F G H I J Faint Very Light Light

CLARITY

FL	IF	VVS ¹⁻²	VS ¹⁻²	SI ¹⁻²	I ¹⁻³
Flawless	Internally Flawless	Very Very Slightly Included	Very Slightly Included	Slightly Included	Included



ADDITIONAL GRADING INFORMATION

Polish **EXCELLENT**

Symmetry **EXCELLENT**

Fluorescence **NONE**

Inscription(s) **IGI LG743515248**

Comments: This Laboratory Grown Diamond was created by Chemical Vapor Deposition (CVD) growth process. Type IIa



IGI



October 14, 2025
IGI Report No LG743515248
ROUND BRILLIANT

3.00 CARATS
E
Color Grade
EXCELLENT
VVS 2
Clarity Grade
62%
Depth
32.9°
Crown Angle
41.2°
Pavilion Angle
43.5%
Depth
12%
Crown Thickness
59.7%
Total Depth
Medium To Slightly Thick (Faceted)

Pointed
Polish **EXCELLENT**
Symmetry **EXCELLENT**
Fluorescence **NONE**
Inscription(s) **IGI LG743515248**

Comments: This Laboratory Grown Diamond was created by Chemical Vapor Deposition (CVD) growth process. Type IIa