

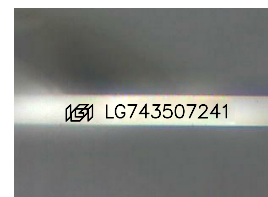
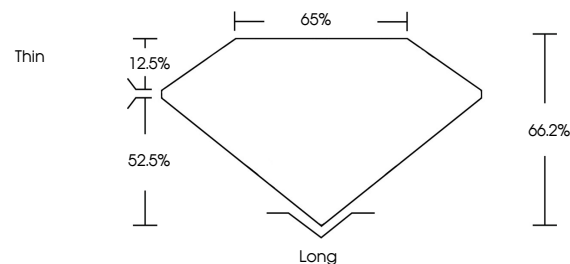


**ELECTRONIC COPY**

## LABORATORY GROWN DIAMOND REPORT

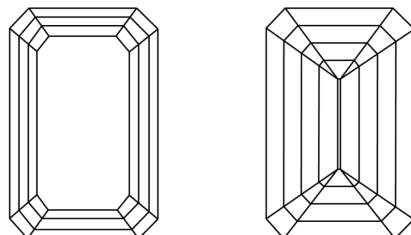
LG743507241  
Report verification at [igi.org](https://igi.org)

## PROPORTIONS



Sample Image Used

## CLARITY CHARACTERISTICS



### KEY TO SYMBOLS

Red symbols indicate internal characteristics.  
Green symbols indicate external characteristics.

## COLOR

D E F G H I J Faint Very Light Light

## CLARITY

FL	IF	VVS <sup>1-2</sup>	VS <sup>1-2</sup>	SI <sup>1-2</sup>	I <sup>1-3</sup>
Flawless	Internally Flawless	Very Very Slightly Included	Very Slightly Included	Slightly Included	Included

## LABORATORY GROWN DIAMOND REPORT



October 16, 2025

IGI Report Number **LG743507241**Description **LABORATORY GROWN DIAMOND**Shape and Cutting Style **EMERALD CUT**

Measurements 8.60 X 6.04 X 4.00 MM

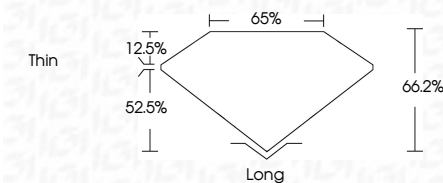
## GRADING RESULTS

Carat Weight **2.01 CARATS**

Color Grade D

Clarity Grade **INTERNALLY FLAWLESS**

Cut Grade **EXCELLENT**



### ADDITIONAL GRADING INFORMATION

Polish **EXCELLENT**Symmetry **EXCELLENT**Fluorescence **NONE**Inscription(s)  LG743507241

Comments: As Grown - No indication of post-growth treatment.

This Laboratory Grown Diamond was created by High Pressure High Temperature (HPHT) growth process.

Type II



October 16, 2025	2.01 CARATS
GI Report No. LG74507241	LF
EMERALD CUT	EXCELLENT
	64.2%
	69%
	Thin
	Long
	EXCELLENT
	EXCELLENT
	NONE
	lg91674507241

Comments:

to be grown - No indication of post-growth

This Laboratory Growth Diamond was created by High Pressure High temperature (HPHT) growth process.

Type II

