



**ELECTRONIC COPY**

LG743506721  
Report verification at igi.org



October 17, 2025

IGI Report Number **LG743506721**

Description **LABORATORY GROWN DIAMOND**

Shape and Cutting Style **OVAL BRILLIANT**

Measurements **8.08 X 5.71 X 3.45 MM**

**GRADING RESULTS**

Carat Weight **1.01 CARAT**

Color Grade **E**

Clarity Grade **VS 1**

October 17, 2025

IGI Report Number **LG743506721**

Description **LABORATORY GROWN DIAMOND**

Shape and Cutting Style **OVAL BRILLIANT**

Measurements **8.08 X 5.71 X 3.45 MM**

**GRADING RESULTS**

Carat Weight **1.01 CARAT**

Color Grade **E**

Clarity Grade **VS 1**

**ADDITIONAL GRADING INFORMATION**

Polish **EXCELLENT**

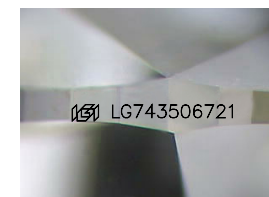
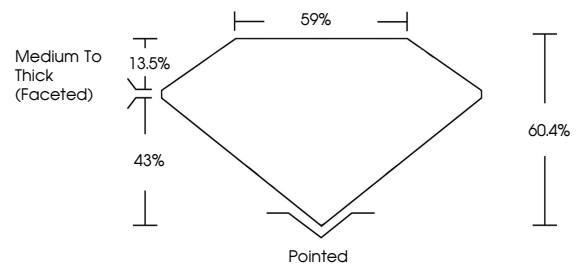
Symmetry **VERY GOOD**

Fluorescence **NONE**

Inscription(s) **IGI LG743506721**

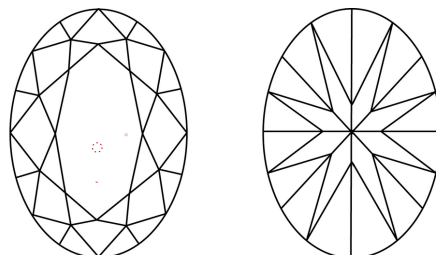
Comments: This Laboratory Grown Diamond was created by Chemical Vapor Deposition (CVD) growth process.  
Type IIa

**PROPORTIONS**



Sample Image Used

**CLARITY CHARACTERISTICS**



**KEY TO SYMBOLS**

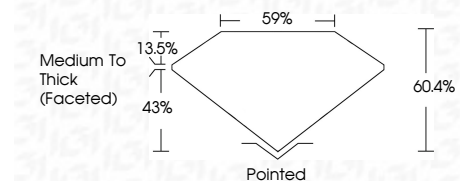
Red symbols indicate internal characteristics.  
Green symbols indicate external characteristics.

**COLOR**

D E F G H I J Faint Very Light Light

**CLARITY**

FL	IF	VS <sup>1-2</sup>	VS <sup>1-2</sup>	SI <sup>1-2</sup>	I <sup>1-3</sup>
Flawless	Internally Flawless	Very Very Slightly Included	Very Slightly Included	Slightly Included	Included



**ADDITIONAL GRADING INFORMATION**

Polish **EXCELLENT**

Symmetry **VERY GOOD**

Fluorescence **NONE**

Inscription(s) **IGI LG743506721**

Comments: This Laboratory Grown Diamond was created by Chemical Vapor Deposition (CVD) growth process.  
Type IIa



**IGI**



October 17, 2025  
IGI Report No LG743506721  
OVAL BRILLIANT  
8.08 X 5.71 X 3.45 MM  
Carat Weight  
Color Grade E  
Clarity Grade VS 1  
Table 60.4%  
Depth 43%  
Girdle Medium To Thick (Faceted)  
Culet Pointed  
Polish EXCELLENT  
Symmetry VERY GOOD  
Fluorescence NONE  
Inscription(s) IGI LG743506721

Comments: This Laboratory Grown Diamond was created by Chemical Vapor Deposition (CVD) growth process.  
Type IIa