



ELECTRONIC COPY

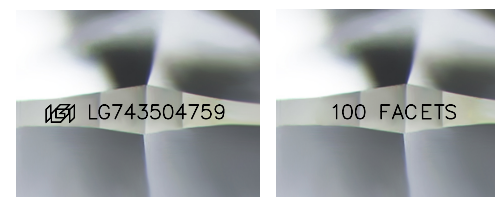
LG743504759
Report verification at igi.org



October 17, 2025
IGI Report Number **LG743504759**
Description **LABORATORY GROWN DIAMOND**
Shape and Cutting Style **ROUND MODIFIED BRILLIANT**
Measurements **7.21 - 7.24 X 4.46 MM**

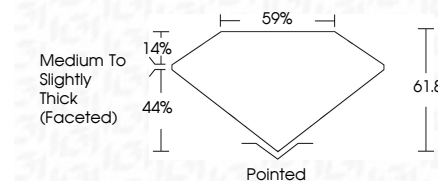
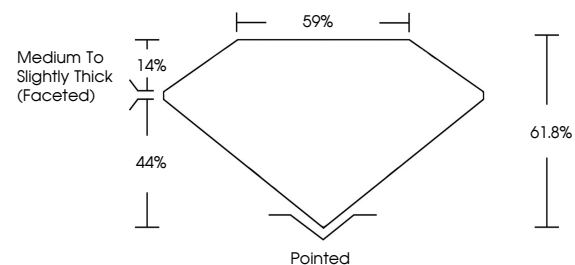
GRADING RESULTS

Carat Weight **1.45 CARAT**
Color Grade **F**
Clarity Grade **VS 1**



Sample Images Used

PROPORTIONS



October 17, 2025
IGI Report Number **LG743504759**
Description **LABORATORY GROWN DIAMOND**
Shape and Cutting Style **ROUND MODIFIED BRILLIANT**
Measurements **7.21 - 7.24 X 4.46 MM**
GRADING RESULTS
Carat Weight **1.45 CARAT**
Color Grade **F**
Clarity Grade **VS 1**

ADDITIONAL GRADING INFORMATION

Polish **EXCELLENT**
Symmetry **EXCELLENT**
Fluorescence **NONE**
Inscription(s) **IGI LG743504759
100 FACETS**

Comments: This Laboratory Grown Diamond was created by Chemical Vapor Deposition (CVD) growth process.
Type IIa

COLOR

D E F G H I J Faint Very Light Light

CLARITY

| FL | IF | VS ¹⁻² | VS ¹⁻² | SI ¹⁻² | I ¹⁻³ |
|----------|---------------------|-----------------------------|------------------------|-------------------|------------------|
| Flawless | Internally Flawless | Very Very Slightly Included | Very Slightly Included | Slightly Included | Included |

ADDITIONAL GRADING INFORMATION

Polish **EXCELLENT**
Symmetry **EXCELLENT**
Fluorescence **NONE**
Inscription(s) **IGI LG743504759
100 FACETS**

Comments: This Laboratory Grown Diamond was created by Chemical Vapor Deposition (CVD) growth process.
Type IIa



October 17, 2025
IGI Report No **LG743504759**
ROUND MODIFIED BRILLIANT
7.21 - 7.24 X 4.46 MM
1.45 CARAT
F
VS 1
61.8%
59%
Medium to Slightly Thick (Faceted)
Pointed
EXCELLENT
EXCELLENT
NONE
IGI LG743504759 100 FACETS
Comments: This Laboratory Grown Diamond was created by Chemical Vapor Deposition (CVD) growth process.
Type IIa