



LABORATORY GROWN DIAMOND REPORT

October 28, 2025
 IGI Report Number **LG742552029**
 Description **LABORATORY GROWN DIAMOND**
 Shape and Cutting Style **ROUND BRILLIANT**
 Measurements **3.04 - 3.05 X 1.84 MM**

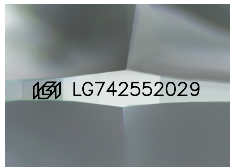
GRADING RESULTS

Carat Weight **0.11 CARAT**
 Color Grade **FANCY PINK**
 Clarity Grade **VVS 2**
 Cut Grade **EXCELLENT**

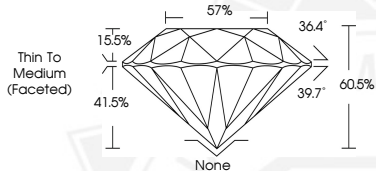
ADDITIONAL GRADING INFORMATION

Polish **VERY GOOD**
 Symmetry **GOOD**
 Fluorescence **SLIGHT**
 Inscription(s) **IGI LG742552029**

Comments: This Laboratory Grown Diamond was created by High Pressure High Temperature (HPHT) growth process. Indications of post-growth treatment.



Sample Image Used



October 28, 2025
 IGI Report Number **LG742552029**
 ROUND BRILLIANT
 LABORATORY GROWN DIAMOND
 3.04 - 3.05 X 1.84 MM
 Carat Weight **0.11 CARAT**
 Color Grade **FANCY PINK**
 Clarity Grade **VVS 2**
 Cut Grade **EXCELLENT**
 Polish **VERY GOOD**
 Symmetry **GOOD**
 Fluorescence **SLIGHT**
 Inscription(s) **IGI LG742552029**

Comments: This Laboratory Grown Diamond was created by High Pressure High Temperature (HPHT) growth process. Indications of post-growth treatment.



October 28, 2025
 IGI Report Number **LG742552029**
 ROUND BRILLIANT
 LABORATORY GROWN DIAMOND
 3.04 - 3.05 X 1.84 MM
 Carat Weight **0.11 CARAT**
 Color Grade **FANCY PINK**
 Clarity Grade **VVS 2**
 Cut Grade **EXCELLENT**
 Polish **VERY GOOD**
 Symmetry **GOOD**
 Fluorescence **SLIGHT**
 Inscription(s) **IGI LG742552029**

Comments: This Laboratory Grown Diamond was created by High Pressure High Temperature (HPHT) growth process. Indications of post-growth treatment.



THIS DOCUMENT WAS PRODUCED WITH THE FOLLOWING SECURITY MEASURES: SPECIAL DOCUMENT PAPER, INK SCREENS, WATERMARK, BACKGROUND DESIGNS, HOLOGRAM AND OTHER SECURITY FEATURES NOT LISTED AND DO EXCEED DOCUMENT SECURITY INDUSTRY GUIDELINES.