



INTERNATIONAL GEMOLOGICAL INSTITUTE

ELECTRONIC COPY

LABORATORY GROWN DIAMOND REPORT

October 28, 2025
IGI Report Number **LG742552019**
Description **LABORATORY GROWN DIAMOND**
Shape and Cutting Style **ROUND BRILLIANT**
Measurements **3.19 - 3.22 X 1.95 MM**

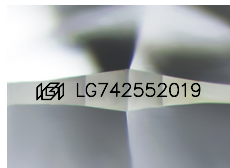
GRADING RESULTS

Carat Weight **0.12 CARAT**
Color Grade **FANCY VIVID BLUE**
Clarity Grade **SI 2**
Cut Grade **GOOD**

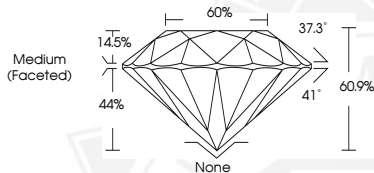
ADDITIONAL GRADING INFORMATION

Polish **VERY GOOD**
Symmetry **FAIR**
Fluorescence **NONE**
Inscription(s) **IGI LG742552019**

Comments: This Laboratory Grown Diamond was created by High Pressure High Temperature (HPHT) growth process. Indications of post-growth treatment.



Sample Image Used



October 28, 2025
IGI Report Number **LG742552019**
ROUND BRILLIANT
LABORATORY GROWN DIAMOND
3.19 - 3.22 X 1.95 MM
Carat Weight **0.12 CARAT**
Color Grade **FANCY VIVID BLUE**
Clarity Grade **SI 2**
Cut Grade **GOOD**
Polish **VERY GOOD**
Symmetry **FAIR**
Fluorescence **NONE**
Inscription(s) **IGI LG742552019**

Comments: This Laboratory Grown Diamond was created by High Pressure High Temperature (HPHT) growth process. Indications of post-growth treatment.



October 28, 2025
IGI Report Number **LG742552019**
ROUND BRILLIANT
LABORATORY GROWN DIAMOND
3.19 - 3.22 X 1.95 MM
Carat Weight **0.12 CARAT**
Color Grade **FANCY VIVID BLUE**
Clarity Grade **SI 2**
Cut Grade **GOOD**
Polish **VERY GOOD**
Symmetry **FAIR**
Fluorescence **NONE**
Inscription(s) **IGI LG742552019**

Comments: This Laboratory Grown Diamond was created by High Pressure High Temperature (HPHT) growth process. Indications of post-growth treatment.



THIS DOCUMENT WAS PRODUCED WITH THE FOLLOWING SECURITY MEASURES: SPECIAL DOCUMENT PAPER, INK SCREENS, WATERMARK, BACKGROUND DESIGNS, HOLOGRAM AND OTHER SECURITY FEATURES NOT LISTED AND DO EXCEED DOCUMENT SECURITY INDUSTRY GUIDELINES.

For terms & conditions and to verify this report, please visit www.igi.org