



INTERNATIONAL GEMOLOGICAL INSTITUTE

ELECTRONIC COPY

LABORATORY GROWN DIAMOND REPORT

October 28, 2025

IGI Report Number

LG742552012

Description

LABORATORY GROWN DIAMOND

Shape and Cutting Style

ROUND BRILLIANT

Measurements

3.10 - 3.12 X 1.83 MM

GRADING RESULTS

Carat Weight

0.11 CARAT

Color Grade

FANCY PINK

Clarity Grade

VS 2

Cut Grade

VERY GOOD

ADDITIONAL GRADING INFORMATION

Polish

GOOD

Symmetry

VERY GOOD

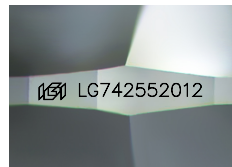
Fluorescence

SLIGHT

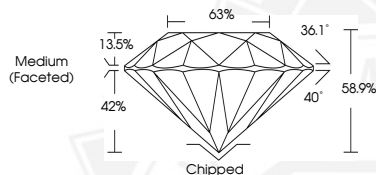
Inscription(s)

IGI LG742552012

Comments: This Laboratory Grown Diamond was created by High Pressure High Temperature (HPHT) growth process. Indications of post-growth treatment.



Sample Image Used



October 28, 2025

IGI Report Number LG742552012

ROUND BRILLIANT

LABORATORY GROWN DIAMOND

3.10 - 3.12 X 1.83 MM

Carat Weight 0.11 CARAT

Color Grade FANCY PINK

Clarity Grade VS 2

Cut Grade VERY GOOD

Polish GOOD

Symmetry VERY GOOD

Fluorescence SLIGHT

Inscription(s) IGI LG742552012

Comments: This Laboratory Grown Diamond was created by High Pressure High Temperature (HPHT) growth process. Indications of post-growth treatment.



October 28, 2025

IGI Report Number LG742552012

ROUND BRILLIANT

LABORATORY GROWN DIAMOND

3.10 - 3.12 X 1.83 MM

Carat Weight 0.11 CARAT

Color Grade FANCY PINK

Clarity Grade VS 2

Cut Grade VERY GOOD

Polish GOOD

Symmetry VERY GOOD

Fluorescence SLIGHT

Inscription(s) IGI LG742552012

Comments: This Laboratory Grown Diamond was created by High Pressure High Temperature (HPHT) growth process. Indications of post-growth treatment.



THIS DOCUMENT WAS PRODUCED WITH THE FOLLOWING SECURITY MEASURES: SPECIAL DOCUMENT PAPER, INK SCREENS, WATERMARK, BACKGROUND DESIGNS, HOLOGRAM AND OTHER SECURITY FEATURES NOT LISTED AND DO EXCEED DOCUMENT SECURITY INDUSTRY GUIDELINES.

For terms & conditions and to verify this report, please visit www.igi.org