



INTERNATIONAL GEMOLOGICAL INSTITUTE

ELECTRONIC COPY

LABORATORY GROWN DIAMOND REPORT

November 3, 2025
IGI Report Number **LG742552008**
Description **LABORATORY GROWN DIAMOND**
Shape and Cutting Style **ROUND BRILLIANT**
Measurements **2.93 - 2.95 X 1.90 MM**

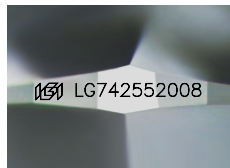
GRADING RESULTS

Carat Weight **0.11 CARAT**
Color Grade **FANCY VIVID PINK**
Clarity Grade **VS 1**
Cut Grade **GOOD**

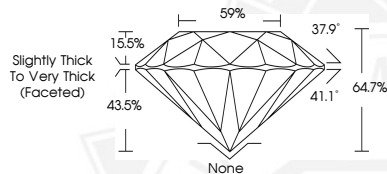
ADDITIONAL GRADING INFORMATION

Polish **VERY GOOD**
Symmetry **GOOD**
Fluorescence **NONE**
Inscription(s) **IGI LG742552008**

Comments: This Laboratory Grown Diamond was created by High Pressure High Temperature (HPHT) growth process. Indications of post-growth treatment.



Sample Image Used



November 3, 2025
IGI Report Number **LG742552008**
ROUND BRILLIANT
LABORATORY GROWN DIAMOND
2.93 - 2.95 X 1.90 MM
Carat Weight **0.11 CARAT**
Color Grade **FANCY VIVID PINK**
Clarity Grade **VS 1**
Cut Grade **GOOD**
Polish **VERY GOOD**
Symmetry **GOOD**
Fluorescence **NONE**
Inscription(s) **IGI LG742552008**

Comments: This Laboratory Grown Diamond was created by High Pressure High Temperature (HPHT) growth process. Indications of post-growth treatment.



November 3, 2025
IGI Report Number **LG742552008**
ROUND BRILLIANT
LABORATORY GROWN DIAMOND
2.93 - 2.95 X 1.90 MM
Carat Weight **0.11 CARAT**
Color Grade **FANCY VIVID PINK**
Clarity Grade **VS 1**
Cut Grade **GOOD**
Polish **VERY GOOD**
Symmetry **GOOD**
Fluorescence **NONE**
Inscription(s) **IGI LG742552008**

Comments: This Laboratory Grown Diamond was created by High Pressure High Temperature (HPHT) growth process. Indications of post-growth treatment.



THIS DOCUMENT WAS PRODUCED WITH THE FOLLOWING SECURITY MEASURES: SPECIAL DOCUMENT PAPER, INK SCREENS, WATERMARK, BACKGROUND DESIGNS, HOLOGRAM AND OTHER SECURITY FEATURES NOT LISTED AND DO EXCEED DOCUMENT SECURITY INDUSTRY GUIDELINES.

For terms & conditions and to verify this report, please visit www.igi.org