



November 7, 2025

IGI Report Number **LG742551979**

ROUND BRILLIANT

LABORATORY GROWN DIAMOND

3.25 - 3.28 X 2.01 MM

Carat Weight	0.13 CARAT
Color Grade	FANCY PINK
Clarity Grade	VS 2
Cut Grade	VERY GOOD
Polish	VERY GOOD
Symmetry	GOOD
Fluorescence	STRONG
Inscription(s)	IGI LG742551979

Comments: This Laboratory Grown Diamond was created by High Pressure High Temperature (HPHT) growth process. Indications of post-growth treatment.

LABORATORY GROWN DIAMOND REPORT

November 7, 2025

IGI Report Number

LG742551979

Description

LABORATORY GROWN DIAMOND

Shape and Cutting Style

ROUND BRILLIANT

Measurements

3.25 - 3.28 X 2.01 MM

GRADING RESULTS

Carat Weight

0.13 CARAT

Color Grade

FANCY PINK

Clarity Grade

VS 2

Cut Grade

VERY GOOD

ADDITIONAL GRADING INFORMATION

Polish

VERY GOOD

Symmetry

GOOD

Fluorescence

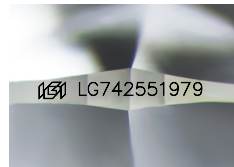
STRONG

Inscription(s)

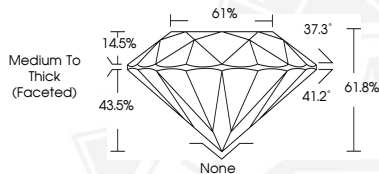
IGI LG742551979

Comments: This Laboratory Grown Diamond was created by High Pressure High Temperature (HPHT) growth process.

Indications of post-growth treatment.



Sample Image Used



November 7, 2025

IGI Report Number **LG742551979**

ROUND BRILLIANT

LABORATORY GROWN DIAMOND

3.25 - 3.28 X 2.01 MM

Carat Weight	0.13 CARAT
Color Grade	FANCY PINK
Clarity Grade	VS 2
Cut Grade	VERY GOOD
Polish	VERY GOOD
Symmetry	GOOD
Fluorescence	STRONG
Inscription(s)	IGI LG742551979

Comments: This Laboratory Grown Diamond was created by High Pressure High Temperature (HPHT) growth process. Indications of post-growth treatment.



THIS DOCUMENT WAS PRODUCED WITH THE FOLLOWING SECURITY MEASURES: SPECIAL DOCUMENT PAPER, INK SCREENS, WATERMARK, BACKGROUND DESIGNS, HOLOGRAM AND OTHER SECURITY FEATURES NOT LISTED AND DO EXCEED DOCUMENT SECURITY INDUSTRY GUIDELINES.