



# INTERNATIONAL GEMOLOGICAL INSTITUTE

ELECTRONIC COPY

## LABORATORY GROWN DIAMOND REPORT

November 1, 2025

IGI Report Number

LG742551975

Description

LABORATORY GROWN DIAMOND

Shape and Cutting Style

ROUND BRILLIANT

Measurements

3.23 - 3.28 X 2.10 MM

### GRADING RESULTS

Carat Weight

0.14 CARAT

Color Grade

FANCY VIVID PINK

Clarity Grade

VS 2

Cut Grade

GOOD

### ADDITIONAL GRADING INFORMATION

Polish

VERY GOOD

Symmetry

VERY GOOD

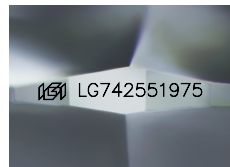
Fluorescence

STRONG

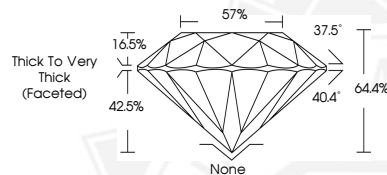
Inscription(s)

IGI LG742551975

Comments: This Laboratory Grown Diamond was created by High Pressure High Temperature (HPHT) growth process. Indications of post-growth treatment.



Sample Image Used



November 1, 2025

IGI Report Number LG742551975

ROUND BRILLIANT

LABORATORY GROWN DIAMOND

3.23 - 3.28 X 2.10 MM

Carat Weight 0.14 CARAT

Color Grade FANCY VIVID PINK

Clarity Grade VS 2

Cut Grade GOOD

Polish VERY GOOD

Symmetry VERY GOOD

Fluorescence STRONG

Inscription(s) IGI LG742551975

Comments: This Laboratory Grown Diamond was created by High Pressure High Temperature (HPHT) growth process. Indications of post-growth treatment.



November 1, 2025

IGI Report Number LG742551975

ROUND BRILLIANT

LABORATORY GROWN DIAMOND

3.23 - 3.28 X 2.10 MM

Carat Weight 0.14 CARAT

Color Grade FANCY VIVID PINK

Clarity Grade VS 2

Cut Grade GOOD

Polish VERY GOOD

Symmetry VERY GOOD

Fluorescence STRONG

Inscription(s) IGI LG742551975

Comments: This Laboratory Grown Diamond was created by High Pressure High Temperature (HPHT) growth process. Indications of post-growth treatment.



THIS DOCUMENT WAS PRODUCED WITH THE FOLLOWING SECURITY MEASURES: SPECIAL DOCUMENT PAPER, INK SCREENS, WATERMARK, BACKGROUND DESIGNS, HOLOGRAM AND OTHER SECURITY FEATURES NOT LISTED AND DO EXCEED DOCUMENT SECURITY INDUSTRY GUIDELINES.

For terms & conditions and to verify this report, please visit [www.igi.org](http://www.igi.org)