



November 1, 2025

IGI Report Number **LG742551971**

ROUND BRILLIANT

LABORATORY GROWN DIAMOND

3.43 - 3.46 X 2.07 MM

Carat Weight **0.15 CARAT**

Color Grade **FANCY VIVID BLUE**

Clarity Grade **VS 1**

Cut Grade **IDEAL**

Polish **EXCELLENT**

Symmetry **EXCELLENT**

Fluorescence **NONE**

Inscription(s) **IGI LG742551971**

Comments: This Laboratory Grown Diamond was created by Chemical Vapor Deposition (CVD) growth process. Indications of post-growth treatment.

LABORATORY GROWN DIAMOND REPORT

November 1, 2025

IGI Report Number

LG742551971

Description

LABORATORY GROWN DIAMOND

Shape and Cutting Style

ROUND BRILLIANT

Measurements

3.43 - 3.46 X 2.07 MM

GRADING RESULTS

Carat Weight

0.15 CARAT

Color Grade

FANCY VIVID BLUE

Clarity Grade

VS 1

Cut Grade

IDEAL

ADDITIONAL GRADING INFORMATION

Polish

EXCELLENT

Symmetry

EXCELLENT

Fluorescence

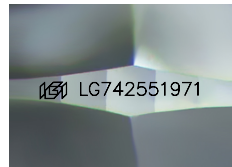
NONE

Inscription(s)

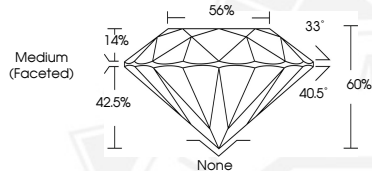
IGI LG742551971

Comments: This Laboratory Grown Diamond was created by Chemical Vapor Deposition (CVD) growth process.

Indications of post-growth treatment.



Sample Image Used



November 1, 2025

IGI Report Number **LG742551971**

ROUND BRILLIANT

LABORATORY GROWN DIAMOND

3.43 - 3.46 X 2.07 MM

Carat Weight **0.15 CARAT**

Color Grade **FANCY VIVID BLUE**

Clarity Grade **VS 1**

Cut Grade **IDEAL**

Polish **EXCELLENT**

Symmetry **EXCELLENT**

Fluorescence **NONE**

Inscription(s) **IGI LG742551971**

Comments: This Laboratory Grown Diamond was created by Chemical Vapor Deposition (CVD) growth process. Indications of post-growth treatment.



THIS DOCUMENT WAS PRODUCED WITH THE FOLLOWING SECURITY MEASURES: SPECIAL DOCUMENT PAPER, INK SCREENS, WATERMARK, BACKGROUND DESIGNS, HOLOGRAM AND OTHER SECURITY FEATURES NOT LISTED AND DO EXCEED DOCUMENT SECURITY INDUSTRY GUIDELINES.