



LABORATORY GROWN DIAMOND REPORT

November 1, 2025
 IGI Report Number **LG742551931**
 Description **LABORATORY GROWN DIAMOND**
 Shape and Cutting Style **ROUND BRILLIANT**
 Measurements **3.29 - 3.34 X 2.01 MM**

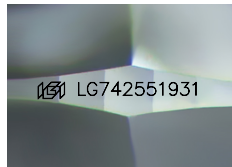
GRADING RESULTS

Carat Weight **0.14 CARAT**
 Color Grade **FANCY INTENSE PINK**
 Clarity Grade **SI 2**
 Cut Grade **VERY GOOD**

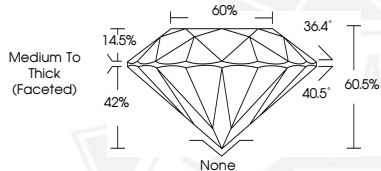
ADDITIONAL GRADING INFORMATION

Polish **VERY GOOD**
 Symmetry **VERY GOOD**
 Fluorescence **STRONG**
 Inscription(s) **IGI LG742551931**

Comments: This Laboratory Grown Diamond was created by High Pressure High Temperature (HPHT) growth process. Indications of post-growth treatment.



Sample Image Used



November 1, 2025
IGI Report Number LG742551931
ROUND BRILLIANT
LABORATORY GROWN DIAMOND
3.29 - 3.34 X 2.01 MM
 Carat Weight **0.14 CARAT**
 Color Grade **FANCY INTENSE PINK**
 Clarity Grade **SI 2**
 Cut Grade **VERY GOOD**
 Polish **VERY GOOD**
 Symmetry **VERY GOOD**
 Fluorescence **STRONG**
 Inscription(s) **IGI LG742551931**

Comments: This Laboratory Grown Diamond was created by High Pressure High Temperature (HPHT) growth process. Indications of post-growth treatment.



November 1, 2025
IGI Report Number LG742551931
ROUND BRILLIANT
LABORATORY GROWN DIAMOND
3.29 - 3.34 X 2.01 MM
 Carat Weight **0.14 CARAT**
 Color Grade **FANCY INTENSE PINK**
 Clarity Grade **SI 2**
 Cut Grade **VERY GOOD**
 Polish **VERY GOOD**
 Symmetry **VERY GOOD**
 Fluorescence **STRONG**
 Inscription(s) **IGI LG742551931**

Comments: This Laboratory Grown Diamond was created by High Pressure High Temperature (HPHT) growth process. Indications of post-growth treatment.



THIS DOCUMENT WAS PRODUCED WITH THE FOLLOWING SECURITY MEASURES: SPECIAL DOCUMENT PAPER, INK SCREENS, WATERMARK, BACKGROUND DESIGNS, HOLOGRAM AND OTHER SECURITY FEATURES NOT LISTED AND DO EXCEED DOCUMENT SECURITY INDUSTRY GUIDELINES.