



# INTERNATIONAL GEMOLOGICAL INSTITUTE

ELECTRONIC COPY

## LABORATORY GROWN DIAMOND REPORT

October 28, 2025  
IGI Report Number **LG742551852**  
Description **LABORATORY GROWN DIAMOND**  
Shape and Cutting Style **ROUND BRILLIANT**  
Measurements **2.86 - 2.89 X 1.79 MM**

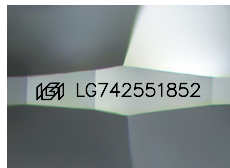
### GRADING RESULTS

Carat Weight **0.09 CARAT**  
Color Grade **FANCY PINK**  
Clarity Grade **VS 2**  
Cut Grade **VERY GOOD**

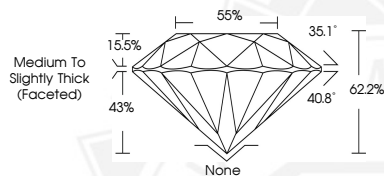
### ADDITIONAL GRADING INFORMATION

Polish **VERY GOOD**  
Symmetry **GOOD**  
Fluorescence **STRONG**  
Inscription(s) **IGI LG742551852**

Comments: This Laboratory Grown Diamond was created by High Pressure High Temperature (HPHT) growth process. Indications of post-growth treatment.



Sample Image Used



THIS DOCUMENT WAS PRODUCED WITH THE FOLLOWING SECURITY MEASURES: SPECIAL DOCUMENT PAPER, INK SCREENS, WATERMARK, BACKGROUND DESIGNS, HOLOGRAM AND OTHER SECURITY FEATURES NOT LISTED AND DO EXCEED DOCUMENT SECURITY INDUSTRY GUIDELINES.

For terms & conditions and to verify this report, please visit [www.igi.org](http://www.igi.org)



October 28, 2025  
IGI Report Number **LG742551852**  
**ROUND BRILLIANT**  
**LABORATORY GROWN DIAMOND**  
**2.86 - 2.89 X 1.79 MM**  
Carat Weight **0.09 CARAT**  
Color Grade **FANCY PINK**  
Clarity Grade **VS 2**  
Cut Grade **VERY GOOD**  
Polish **VERY GOOD**  
Symmetry **GOOD**  
Fluorescence **STRONG**  
Inscription(s) **IGI LG742551852**

Comments: This Laboratory Grown Diamond was created by High Pressure High Temperature (HPHT) growth process. Indications of post-growth treatment.



October 28, 2025  
IGI Report Number **LG742551852**  
**ROUND BRILLIANT**  
**LABORATORY GROWN DIAMOND**  
**2.86 - 2.89 X 1.79 MM**  
Carat Weight **0.09 CARAT**  
Color Grade **FANCY PINK**  
Clarity Grade **VS 2**  
Cut Grade **VERY GOOD**  
Polish **VERY GOOD**  
Symmetry **GOOD**  
Fluorescence **STRONG**  
Inscription(s) **IGI LG742551852**

Comments: This Laboratory Grown Diamond was created by High Pressure High Temperature (HPHT) growth process. Indications of post-growth treatment.