



INTERNATIONAL GEMOLOGICAL INSTITUTE

ELECTRONIC COPY

LABORATORY GROWN DIAMOND REPORT

October 27, 2025

IGI Report Number

LG742551840

Description

LABORATORY GROWN DIAMOND

Shape and Cutting Style

ROUND BRILLIANT

Measurements

2.90 - 2.92 X 1.73 MM

GRADING RESULTS

Carat Weight

0.09 CARAT

Color Grade

FANCY INTENSE PINK

Clarity Grade

VS 1

Cut Grade

EXCELLENT

ADDITIONAL GRADING INFORMATION

Polish

EXCELLENT

Symmetry

VERY GOOD

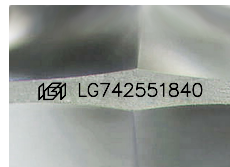
Fluorescence

STRONG

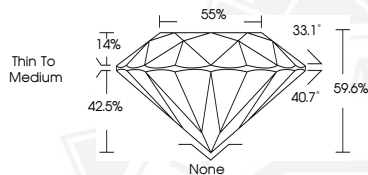
Inscription(s)

LG742551840

Comments: This Laboratory Grown Diamond was created by High Pressure High Temperature (HPHT) growth process. Indications of post-growth treatment.



Sample Image Used



October 27, 2025

IGI Report Number LG742551840

ROUND BRILLIANT

LABORATORY GROWN DIAMOND

2.90 - 2.92 X 1.73 MM

Carat Weight 0.09 CARAT

Color Grade FANCY INTENSE PINK

Clarity Grade VS 1

Cut Grade EXCELLENT

Polish EXCELLENT

Symmetry VERY GOOD

Fluorescence STRONG

Inscription(s) LG742551840

Comments: This Laboratory Grown Diamond was created by High Pressure High Temperature (HPHT) growth process. Indications of post-growth treatment.



October 27, 2025

IGI Report Number LG742551840

ROUND BRILLIANT

LABORATORY GROWN DIAMOND

2.90 - 2.92 X 1.73 MM

Carat Weight 0.09 CARAT

Color Grade FANCY INTENSE PINK

Clarity Grade VS 1

Cut Grade EXCELLENT

Polish EXCELLENT

Symmetry VERY GOOD

Fluorescence STRONG

Inscription(s) LG742551840

Comments: This Laboratory Grown Diamond was created by High Pressure High Temperature (HPHT) growth process. Indications of post-growth treatment.



THIS DOCUMENT WAS PRODUCED WITH THE FOLLOWING SECURITY MEASURES: SPECIAL DOCUMENT PAPER, INK SCREENS, WATERMARK, BACKGROUND DESIGNS, HOLOGRAM AND OTHER SECURITY FEATURES NOT LISTED AND DO EXCEED DOCUMENT SECURITY INDUSTRY GUIDELINES.

For terms & conditions and to verify this report, please visit www.igi.org