



# INTERNATIONAL GEMOLOGICAL INSTITUTE

ELECTRONIC COPY

## LABORATORY GROWN DIAMOND REPORT

October 27, 2025  
IGI Report Number **LG742551823**  
Description **LABORATORY GROWN DIAMOND**  
Shape and Cutting Style **ROUND BRILLIANT**  
Measurements **3.13 - 3.16 X 2.00 MM**

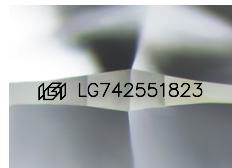
### GRADING RESULTS

Carat Weight **0.12 CARAT**  
Color Grade **FANCY LIGHT PINK**  
Clarity Grade **VS 1**  
Cut Grade **FAIR**

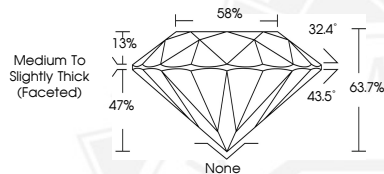
### ADDITIONAL GRADING INFORMATION

Polish **VERY GOOD**  
Symmetry **VERY GOOD**  
Fluorescence **SLIGHT**  
Inscription(s) **IGI LG742551823**

Comments: This Laboratory Grown Diamond was created by High Pressure High Temperature (HPHT) growth process.  
Indications of post-growth treatment.



Sample Image Used



October 27, 2025  
IGI Report Number **LG742551823**  
**ROUND BRILLIANT**  
**LABORATORY GROWN DIAMOND**  
**3.13 - 3.16 X 2.00 MM**  
Carat Weight **0.12 CARAT**  
Color Grade **FANCY LIGHT PINK**  
Clarity Grade **VS 1**  
Cut Grade **FAIR**  
Polish **VERY GOOD**  
Symmetry **VERY GOOD**  
Fluorescence **SLIGHT**  
Inscription(s) **IGI LG742551823**

Comments: This Laboratory Grown Diamond was created by High Pressure High Temperature (HPHT) growth process. Indications of post-growth treatment.



October 27, 2025  
IGI Report Number **LG742551823**  
**ROUND BRILLIANT**  
**LABORATORY GROWN DIAMOND**  
**3.13 - 3.16 X 2.00 MM**  
Carat Weight **0.12 CARAT**  
Color Grade **FANCY LIGHT PINK**  
Clarity Grade **VS 1**  
Cut Grade **FAIR**  
Polish **VERY GOOD**  
Symmetry **VERY GOOD**  
Fluorescence **SLIGHT**  
Inscription(s) **IGI LG742551823**

Comments: This Laboratory Grown Diamond was created by High Pressure High Temperature (HPHT) growth process. Indications of post-growth treatment.



THIS DOCUMENT WAS PRODUCED WITH THE FOLLOWING SECURITY MEASURES: SPECIAL DOCUMENT PAPER, INK SCREENS, WATERMARK, BACKGROUND DESIGNS, HOLOGRAM AND OTHER SECURITY FEATURES NOT LISTED AND DO EXCEED DOCUMENT SECURITY INDUSTRY GUIDELINES.

For terms & conditions and to verify this report, please visit [www.igi.org](http://www.igi.org)