



**INTERNATIONAL
GEMOLOGICAL
INSTITUTE**

LABORATORY GROWN DIAMOND REPORT

November 3, 2025
 IGI Report Number **LG742551797**
 Description **LABORATORY GROWN DIAMOND**
 Shape and Cutting Style **ROUND BRILLIANT**
 Measurements **2.97 - 3.03 X 1.90 MM**

GRADING RESULTS

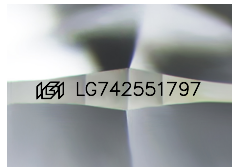
Carat Weight **0.11 CARAT**
 Color Grade **FANCY VIVID PINK**
 Clarity Grade **SI 1**
 Cut Grade **VERY GOOD**

ADDITIONAL GRADING INFORMATION

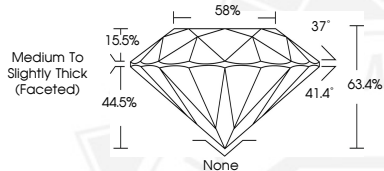
Polish **VERY GOOD**
 Symmetry **GOOD**
 Fluorescence **STRONG**
 Inscription(s) **IGI LG742551797**

Comments: This Laboratory Grown Diamond was created by High Pressure High Temperature (HPHT) growth process. Indications of post-growth treatment.

ELECTRONIC COPY



Sample Image Used



November 3, 2025
 IGI Report Number **LG742551797**
 ROUND BRILLIANT
 LABORATORY GROWN DIAMOND
 2.97 - 3.03 X 1.90 MM
 Carat Weight **0.11 CARAT**
 Color Grade **FANCY VIVID PINK**
 Clarity Grade **SI 1**
 Cut Grade **VERY GOOD**
 Polish **VERY GOOD**
 Symmetry **GOOD**
 Fluorescence **STRONG**
 Inscription(s) **IGI LG742551797**

Comments: This Laboratory Grown Diamond was created by High Pressure High Temperature (HPHT) growth process. Indications of post-growth treatment.



November 3, 2025
 IGI Report Number **LG742551797**
 ROUND BRILLIANT
 LABORATORY GROWN DIAMOND
 2.97 - 3.03 X 1.90 MM
 Carat Weight **0.11 CARAT**
 Color Grade **FANCY VIVID PINK**
 Clarity Grade **SI 1**
 Cut Grade **VERY GOOD**
 Polish **VERY GOOD**
 Symmetry **GOOD**
 Fluorescence **STRONG**
 Inscription(s) **IGI LG742551797**

Comments: This Laboratory Grown Diamond was created by High Pressure High Temperature (HPHT) growth process. Indications of post-growth treatment.



THIS DOCUMENT WAS PRODUCED WITH THE FOLLOWING SECURITY MEASURES: SPECIAL DOCUMENT PAPER, INK SCREENS, WATERMARK, BACKGROUND DESIGNS, HOLOGRAM AND OTHER SECURITY FEATURES NOT LISTED AND DO EXCEED DOCUMENT SECURITY INDUSTRY GUIDELINES.

For terms & conditions and to verify this report, please visit www.igi.org