



INTERNATIONAL GEMOLOGICAL INSTITUTE

ELECTRONIC COPY

LABORATORY GROWN DIAMOND REPORT

November 3, 2025

IGI Report Number

LG742551776

Description

LABORATORY GROWN DIAMOND

Shape and Cutting Style

ROUND BRILLIANT

Measurements

2.97 - 3.00 X 1.73 MM

GRADING RESULTS

Carat Weight

0.09 CARAT

Color Grade

FANCY VIVID BLUE

Clarity Grade

VS 2

Cut Grade

GOOD

ADDITIONAL GRADING INFORMATION

Polish

GOOD

Symmetry

FAIR

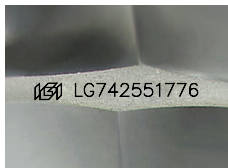
Fluorescence

NONE

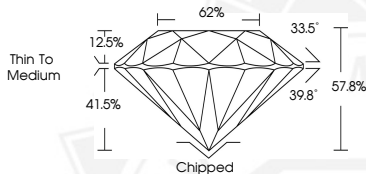
Inscription(s)

IGI LG742551776

Comments: This Laboratory Grown Diamond was created by High Pressure High Temperature (HPHT) growth process. Indications of post-growth treatment.



Sample Image Used



November 3, 2025

IGI Report Number LG742551776

ROUND BRILLIANT

LABORATORY GROWN DIAMOND

2.97 - 3.00 X 1.73 MM

Carat Weight 0.09 CARAT

Color Grade FANCY VIVID BLUE

Clarity Grade VS 2

Cut Grade GOOD

Polish GOOD

Symmetry FAIR

Fluorescence NONE

Inscription(s) IGI LG742551776

Comments: This Laboratory Grown Diamond was created by High Pressure High Temperature (HPHT) growth process. Indications of post-growth treatment.



November 3, 2025

IGI Report Number LG742551776

ROUND BRILLIANT

LABORATORY GROWN DIAMOND

2.97 - 3.00 X 1.73 MM

Carat Weight 0.09 CARAT

Color Grade FANCY VIVID BLUE

Clarity Grade VS 2

Cut Grade GOOD

Polish GOOD

Symmetry FAIR

Fluorescence NONE

Inscription(s) IGI LG742551776

Comments: This Laboratory Grown Diamond was created by High Pressure High Temperature (HPHT) growth process. Indications of post-growth treatment.



THIS DOCUMENT WAS PRODUCED WITH THE FOLLOWING SECURITY MEASURES: SPECIAL DOCUMENT PAPER, INK SCREENS, WATERMARK, BACKGROUND DESIGNS, HOLOGRAM AND OTHER SECURITY FEATURES NOT LISTED AND DO EXCEED DOCUMENT SECURITY INDUSTRY GUIDELINES.

For terms & conditions and to verify this report, please visit www.igi.org