



**LABORATORY GROWN DIAMOND REPORT**

November 3, 2025  
 IGI Report Number **LG742551767**  
 Description **LABORATORY GROWN DIAMOND**  
 Shape and Cutting Style **ROUND BRILLIANT**  
 Measurements **3.34 - 3.42 X 2.08 MM**

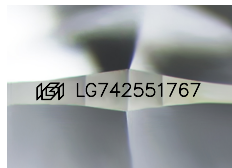
**GRADING RESULTS**

Carat Weight **0.15 CARAT**  
 Color Grade **FANCY LIGHT PINK**  
 Clarity Grade **VVS 2**  
 Cut Grade **VERY GOOD**

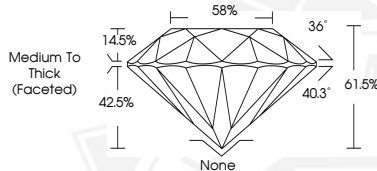
**ADDITIONAL GRADING INFORMATION**

Polish **VERY GOOD**  
 Symmetry **GOOD**  
 Fluorescence **SLIGHT**  
 Inscription(s) **IGI LG742551767**

Comments: This Laboratory Grown Diamond was created by High Pressure High Temperature (HPHT) growth process. Indications of post-growth treatment.



Sample Image Used



November 3, 2025  
 IGI Report Number **LG742551767**  
 ROUND BRILLIANT  
 LABORATORY GROWN DIAMOND  
 3.34 - 3.42 X 2.08 MM  
 Carat Weight **0.15 CARAT**  
 Color Grade **FANCY LIGHT PINK**  
 Clarity Grade **VVS 2**  
 Cut Grade **VERY GOOD**  
 Polish **VERY GOOD**  
 Symmetry **GOOD**  
 Fluorescence **SLIGHT**  
 Inscription(s) **IGI LG742551767**

Comments: This Laboratory Grown Diamond was created by High Pressure High Temperature (HPHT) growth process. Indications of post-growth treatment.



November 3, 2025  
 IGI Report Number **LG742551767**  
 ROUND BRILLIANT  
 LABORATORY GROWN DIAMOND  
 3.34 - 3.42 X 2.08 MM  
 Carat Weight **0.15 CARAT**  
 Color Grade **FANCY LIGHT PINK**  
 Clarity Grade **VVS 2**  
 Cut Grade **VERY GOOD**  
 Polish **VERY GOOD**  
 Symmetry **GOOD**  
 Fluorescence **SLIGHT**  
 Inscription(s) **IGI LG742551767**

Comments: This Laboratory Grown Diamond was created by High Pressure High Temperature (HPHT) growth process. Indications of post-growth treatment.



THIS DOCUMENT WAS PRODUCED WITH THE FOLLOWING SECURITY MEASURES: SPECIAL DOCUMENT PAPER, INK SCREENS, WATERMARK, BACKGROUND DESIGNS, HOLOGRAM AND OTHER SECURITY FEATURES NOT LISTED AND DO EXCEED DOCUMENT SECURITY INDUSTRY GUIDELINES.