



**INTERNATIONAL  
GEMOLOGICAL  
INSTITUTE**

**ELECTRONIC COPY**

**LABORATORY GROWN DIAMOND REPORT**

November 1, 2025  
 IGI Report Number **LG742551759**  
 Description **LABORATORY GROWN DIAMOND**  
 Shape and Cutting Style **ROUND BRILLIANT**  
 Measurements **3.02 - 3.04 X 1.97 MM**

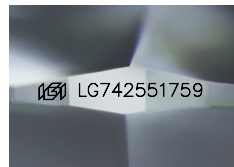
**GRADING RESULTS**

Carat Weight **0.12 CARAT**  
 Color Grade **FANCY INTENSE PINK**  
 Clarity Grade **VS 1**  
 Cut Grade **GOOD**

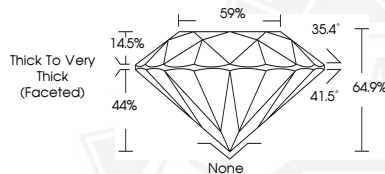
**ADDITIONAL GRADING INFORMATION**

Polish **VERY GOOD**  
 Symmetry **FAIR**  
 Fluorescence **SLIGHT**  
 Inscription(s) **IGI LG742551759**

Comments: This Laboratory Grown Diamond was created by High Pressure High Temperature (HPHT) growth process. Indications of post-growth treatment.



Sample Image Used



**November 1, 2025**  
**IGI Report Number LG742551759**  
**ROUND BRILLIANT**  
**LABORATORY GROWN DIAMOND**  
**3.02 - 3.04 X 1.97 MM**  
 Carat Weight **0.12 CARAT**  
 Color Grade **FANCY INTENSE PINK**  
 Clarity Grade **VS 1**  
 Cut Grade **GOOD**  
 Polish **VERY GOOD**  
 Symmetry **FAIR**  
 Fluorescence **SLIGHT**  
 Inscription(s) **IGI LG742551759**

Comments: This Laboratory Grown Diamond was created by High Pressure High Temperature (HPHT) growth process. Indications of post-growth treatment.



**November 1, 2025**  
**IGI Report Number LG742551759**  
**ROUND BRILLIANT**  
**LABORATORY GROWN DIAMOND**  
**3.02 - 3.04 X 1.97 MM**  
 Carat Weight **0.12 CARAT**  
 Color Grade **FANCY INTENSE PINK**  
 Clarity Grade **VS 1**  
 Cut Grade **GOOD**  
 Polish **VERY GOOD**  
 Symmetry **FAIR**  
 Fluorescence **SLIGHT**  
 Inscription(s) **IGI LG742551759**

Comments: This Laboratory Grown Diamond was created by High Pressure High Temperature (HPHT) growth process. Indications of post-growth treatment.

THIS DOCUMENT WAS PRODUCED WITH THE FOLLOWING SECURITY MEASURES: SPECIAL DOCUMENT PAPER, INK SCREENS, WATERMARK, BACKGROUND DESIGNS, HOLOGRAM AND OTHER SECURITY FEATURES NOT LISTED AND DO EXCEED DOCUMENT SECURITY INDUSTRY GUIDELINES.

For terms & conditions and to verify this report, please visit [www.igi.org](http://www.igi.org)