



**LABORATORY GROWN DIAMOND REPORT**

November 1, 2025  
 IGI Report Number **LG742551744**  
 Description **LABORATORY GROWN DIAMOND**  
 Shape and Cutting Style **ROUND BRILLIANT**  
 Measurements **2.95 - 2.97 X 1.86 MM**

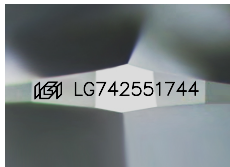
**GRADING RESULTS**

Carat Weight **0.10 CARAT**  
 Color Grade **FANCY INTENSE PINK**  
 Clarity Grade **VS 1**  
 Cut Grade **VERY GOOD**

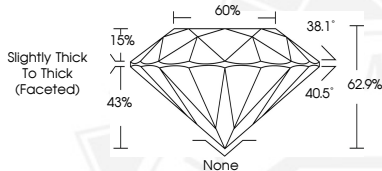
**ADDITIONAL GRADING INFORMATION**

Polish **VERY GOOD**  
 Symmetry **GOOD**  
 Fluorescence **STRONG**  
 Inscription(s) **IGI LG742551744**

Comments: This Laboratory Grown Diamond was created by High Pressure High Temperature (HPHT) growth process. Indications of post-growth treatment.



Sample Image Used



**November 1, 2025**  
**IGI Report Number LG742551744**  
**ROUND BRILLIANT**  
**LABORATORY GROWN DIAMOND**  
**2.95 - 2.97 X 1.86 MM**  
 Carat Weight **0.10 CARAT**  
 Color Grade **FANCY INTENSE PINK**  
 Clarity Grade **VS 1**  
 Cut Grade **VERY GOOD**  
 Polish **VERY GOOD**  
 Symmetry **GOOD**  
 Fluorescence **STRONG**  
 Inscription(s) **IGI LG742551744**

Comments: This Laboratory Grown Diamond was created by High Pressure High Temperature (HPHT) growth process. Indications of post-growth treatment.



**November 1, 2025**  
**IGI Report Number LG742551744**  
**ROUND BRILLIANT**  
**LABORATORY GROWN DIAMOND**  
**2.95 - 2.97 X 1.86 MM**  
 Carat Weight **0.10 CARAT**  
 Color Grade **FANCY INTENSE PINK**  
 Clarity Grade **VS 1**  
 Cut Grade **VERY GOOD**  
 Polish **VERY GOOD**  
 Symmetry **GOOD**  
 Fluorescence **STRONG**  
 Inscription(s) **IGI LG742551744**

Comments: This Laboratory Grown Diamond was created by High Pressure High Temperature (HPHT) growth process. Indications of post-growth treatment.



THIS DOCUMENT WAS PRODUCED WITH THE FOLLOWING SECURITY MEASURES: SPECIAL DOCUMENT PAPER, INK SCREENS, WATERMARK, BACKGROUND DESIGNS, HOLOGRAM AND OTHER SECURITY FEATURES NOT LISTED AND DO EXCEED DOCUMENT SECURITY INDUSTRY GUIDELINES.