



October 28, 2025

IGI Report Number LG742551718
HEART MODIFIED BRILLIANT
LABORATORY GROWN DIAMOND
3.10 X 3.43 X 1.57 MM

Carat Weight **0.12 CARAT**
Color Grade **FANCY VIVID BLUE**
Clarity Grade **VS 2**
Polish **VERY GOOD**
Symmetry **GOOD**
Fluorescence **NONE**
Inscription(s) **IGI LG742551718**

Comments: This Laboratory Grown Diamond was created by Chemical Vapor Deposition (CVD) growth process. Indications of post-growth treatment.

LABORATORY GROWN DIAMOND REPORT

October 28, 2025
IGI Report Number **LG742551718**
Description **LABORATORY GROWN DIAMOND**
Shape and Cutting Style **HEART MODIFIED BRILLIANT**
Measurements **3.10 X 3.43 X 1.57 MM**

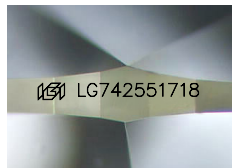
GRADING RESULTS

Carat Weight **0.12 CARAT**
Color Grade **FANCY VIVID BLUE**
Clarity Grade **VS 2**

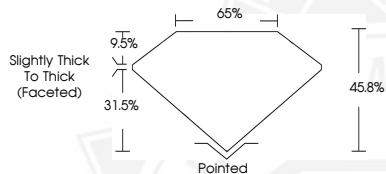
ADDITIONAL GRADING INFORMATION

Polish **VERY GOOD**
Symmetry **GOOD**
Fluorescence **NONE**
Inscription(s) **IGI LG742551718**

Comments: This Laboratory Grown Diamond was created by Chemical Vapor Deposition (CVD) growth process. Indications of post-growth treatment.



Sample Image Used



October 28, 2025

IGI Report Number LG742551718
HEART MODIFIED BRILLIANT
LABORATORY GROWN DIAMOND
3.10 X 3.43 X 1.57 MM

Carat Weight **0.12 CARAT**
Color Grade **FANCY VIVID BLUE**
Clarity Grade **VS 2**
Polish **VERY GOOD**
Symmetry **GOOD**
Fluorescence **NONE**
Inscription(s) **IGI LG742551718**

Comments: This Laboratory Grown Diamond was created by Chemical Vapor Deposition (CVD) growth process. Indications of post-growth treatment.



THIS DOCUMENT WAS PRODUCED WITH THE FOLLOWING SECURITY MEASURES: SPECIAL DOCUMENT PAPER, INK SCREENS, WATERMARK, BACKGROUND DESIGNS, HOLOGRAM AND OTHER SECURITY FEATURES NOT LISTED AND DO EXCEED DOCUMENT SECURITY INDUSTRY GUIDELINES.