



**INTERNATIONAL  
GEMOLOGICAL  
INSTITUTE**

**ELECTRONIC COPY**



November 1, 2025

**IGI Report Number** LG742551703  
**ROUND BRILLIANT**  
**LABORATORY GROWN DIAMOND**  
**3.34 - 3.37 X 2.06 MM**

**Carat Weight** 0.14 CARAT  
**Color Grade** FANCY VIVID BLUE  
**Clarity Grade** VS 1  
**Cut Grade** IDEAL  
**Polish** VERY GOOD  
**Symmetry** VERY GOOD  
**Fluorescence** NONE  
**Inscription(s)** IGI LG742551703

Comments: This Laboratory Grown Diamond was created by High Pressure High Temperature (HPHT) growth process. Indications of post-growth treatment.

**LABORATORY GROWN DIAMOND REPORT**

November 1, 2025  
IGI Report Number **LG742551703**  
Description **LABORATORY GROWN DIAMOND**  
Shape and Cutting Style **ROUND BRILLIANT**  
Measurements **3.34 - 3.37 X 2.06 MM**

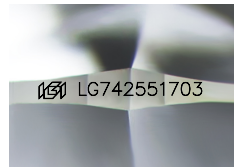
**GRADING RESULTS**

**Carat Weight** 0.14 CARAT  
**Color Grade** FANCY VIVID BLUE  
**Clarity Grade** VS 1  
**Cut Grade** IDEAL

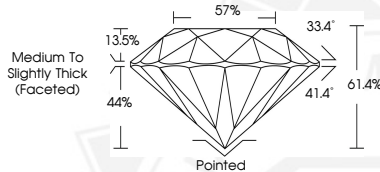
**ADDITIONAL GRADING INFORMATION**

**Polish** VERY GOOD  
**Symmetry** VERY GOOD  
**Fluorescence** NONE  
**Inscription(s)** IGI LG742551703

Comments: This Laboratory Grown Diamond was created by High Pressure High Temperature (HPHT) growth process. Indications of post-growth treatment.



Sample Image Used



November 1, 2025

**IGI Report Number** LG742551703  
**ROUND BRILLIANT**  
**LABORATORY GROWN DIAMOND**  
**3.34 - 3.37 X 2.06 MM**

**Carat Weight** 0.14 CARAT  
**Color Grade** FANCY VIVID BLUE  
**Clarity Grade** VS 1  
**Cut Grade** IDEAL  
**Polish** VERY GOOD  
**Symmetry** VERY GOOD  
**Fluorescence** NONE  
**Inscription(s)** IGI LG742551703

Comments: This Laboratory Grown Diamond was created by High Pressure High Temperature (HPHT) growth process. Indications of post-growth treatment.



THIS DOCUMENT WAS PRODUCED WITH THE FOLLOWING SECURITY MEASURES: SPECIAL DOCUMENT PAPER, INK SCREENS, WATERMARK, BACKGROUND DESIGNS, HOLOGRAM AND OTHER SECURITY FEATURES NOT LISTED AND DO EXCEED DOCUMENT SECURITY INDUSTRY GUIDELINES.

For terms & conditions and to verify this report, please visit [www.igi.org](http://www.igi.org)