



**INTERNATIONAL
GEMOLOGICAL
INSTITUTE**

ELECTRONIC COPY

LABORATORY GROWN DIAMOND REPORT

October 27, 2025
 IGI Report Number **LG742551684**
 Description **LABORATORY GROWN DIAMOND**
 Shape and Cutting Style **ROUND BRILLIANT**
 Measurements **3.42 - 3.44 X 2.09 MM**

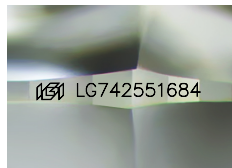
GRADING RESULTS

Carat Weight **0.15 CARAT**
 Color Grade **FANCY INTENSE PINK**
 Clarity Grade **VVS 2**
 Cut Grade **GOOD**

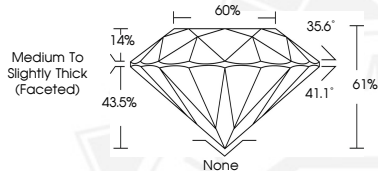
ADDITIONAL GRADING INFORMATION

Polish **EXCELLENT**
 Symmetry **FAIR**
 Fluorescence **STRONG**
 Inscription(s) **IGI LG742551684**

Comments: This Laboratory Grown Diamond was created by High Pressure High Temperature (HPHT) growth process. Indications of post-growth treatment.



Sample Image Used



October 27, 2025
 IGI Report Number **LG742551684**
 ROUND BRILLIANT
 LABORATORY GROWN DIAMOND
 3.42 - 3.44 X 2.09 MM
 Carat Weight **0.15 CARAT**
 Color Grade **FANCY INTENSE PINK**
 Clarity Grade **VVS 2**
 Cut Grade **GOOD**
 Polish **EXCELLENT**
 Symmetry **FAIR**
 Fluorescence **STRONG**
 Inscription(s) **IGI LG742551684**

Comments: This Laboratory Grown Diamond was created by High Pressure High Temperature (HPHT) growth process. Indications of post-growth treatment.



October 27, 2025
 IGI Report Number **LG742551684**
 ROUND BRILLIANT
 LABORATORY GROWN DIAMOND
 3.42 - 3.44 X 2.09 MM
 Carat Weight **0.15 CARAT**
 Color Grade **FANCY INTENSE PINK**
 Clarity Grade **VVS 2**
 Cut Grade **GOOD**
 Polish **EXCELLENT**
 Symmetry **FAIR**
 Fluorescence **STRONG**
 Inscription(s) **IGI LG742551684**

Comments: This Laboratory Grown Diamond was created by High Pressure High Temperature (HPHT) growth process. Indications of post-growth treatment.

THIS DOCUMENT WAS PRODUCED WITH THE FOLLOWING SECURITY MEASURES: SPECIAL DOCUMENT PAPER, INK SCREENS, WATERMARK, BACKGROUND DESIGNS, HOLOGRAM AND OTHER SECURITY FEATURES NOT LISTED AND DO EXCEED DOCUMENT SECURITY INDUSTRY GUIDELINES.

For terms & conditions and to verify this report, please visit www.igi.org