



**INTERNATIONAL
GEMOLOGICAL
INSTITUTE**

ELECTRONIC COPY



October 28, 2025

IGI Report Number **LG742551650**

ROUND BRILLIANT

LABORATORY GROWN DIAMOND

3.13 - 3.19 X 1.94 MM

Carat Weight **0.12 CARAT**

Color Grade **FANCY VIVID PINK**

Clarity Grade **VVS 2**

Cut Grade **VERY GOOD**

Polish **GOOD**

Symmetry **VERY GOOD**

Fluorescence **STRONG**

Inscription(s) **IGI LG742551650**

Comments: This Laboratory Grown Diamond was created by High Pressure High Temperature (HPHT) growth process. Indications of post-growth treatment.

LABORATORY GROWN DIAMOND REPORT

October 28, 2025

IGI Report Number

LG742551650

Description

LABORATORY GROWN DIAMOND

Shape and Cutting Style

ROUND BRILLIANT

Measurements

3.13 - 3.19 X 1.94 MM

GRADING RESULTS

Carat Weight

0.12 CARAT

Color Grade

FANCY VIVID PINK

Clarity Grade

VVS 2

Cut Grade

VERY GOOD

ADDITIONAL GRADING INFORMATION

Polish

GOOD

Symmetry

VERY GOOD

Fluorescence

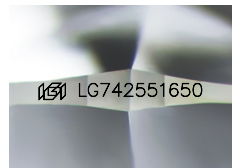
STRONG

Inscription(s)

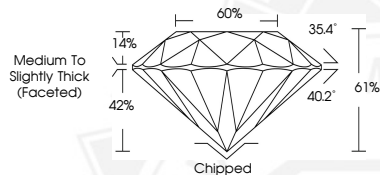
IGI LG742551650

Comments: This Laboratory Grown Diamond was created by High Pressure High Temperature (HPHT) growth process.

Indications of post-growth treatment.



Sample Image Used



October 28, 2025

IGI Report Number **LG742551650**

ROUND BRILLIANT

LABORATORY GROWN DIAMOND

3.13 - 3.19 X 1.94 MM

Carat Weight **0.12 CARAT**

Color Grade **FANCY VIVID PINK**

Clarity Grade **VVS 2**

Cut Grade **VERY GOOD**

Polish **GOOD**

Symmetry **VERY GOOD**

Fluorescence **STRONG**

Inscription(s) **IGI LG742551650**

Comments: This Laboratory Grown Diamond was created by High Pressure High Temperature (HPHT) growth process. Indications of post-growth treatment.



THIS DOCUMENT WAS PRODUCED WITH THE FOLLOWING SECURITY MEASURES: SPECIAL DOCUMENT PAPER, INK SCREENS, WATERMARK, BACKGROUND DESIGNS, HOLOGRAM AND OTHER SECURITY FEATURES NOT LISTED AND DO EXCEED DOCUMENT SECURITY INDUSTRY GUIDELINES.

For terms & conditions and to verify this report, please visit www.igi.org