



**ELECTRONIC COPY**

## LABORATORY GROWN DIAMOND REPORT

October 13, 2025	
IGI Report Number	LG742548469
Description	LABORATORY GROWN DIAMOND
Shape and Cutting Style	PRINCESS CUT
Measurements	5.60 X 5.50 X 3.93 MM

## GRADING RESULTS

Carat Weight	1.08 CARAT
Color Grade	D
Clarity Grade	VS 1

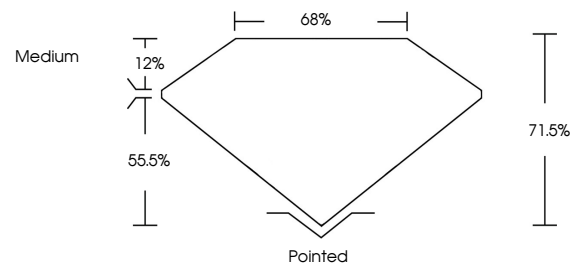
### ADDITIONAL GRADING INFORMATION

Polish	EXCELLENT
Symmetry	EXCELLENT
Fluorescence	NONE
Inscription(s)	 LG742548469

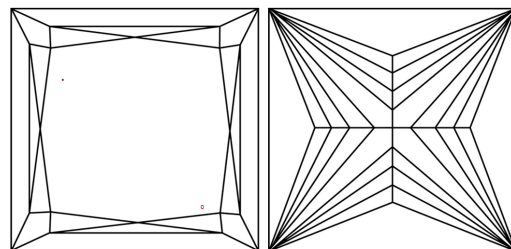
Comments: This Laboratory Grown Diamond was created by Chemical Vapor Deposition (CVD) growth process.  
Type IIa

LG742548469  
Report verification at [igi.org](https://igi.org)

## PROPORTIONS

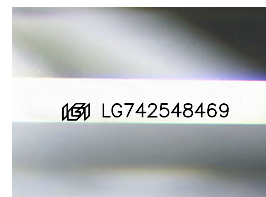


## CLARITY CHARACTERISTICS



## KEY TO SYMBOLS

Red symbols indicate internal characteristics.  
Green symbols indicate external characteristics.



Sample Image Used

**COLOR**

D E F G H I J Faint Very Light Light

## CLARITY

FL	IF	VVS <sup>1-2</sup>	VS <sup>1-2</sup>	SI <sup>1-2</sup>	I <sup>1-3</sup>
Flawless	Internally Flawless	Very Very Slightly Included	Very Slightly Included	Slightly Included	Included

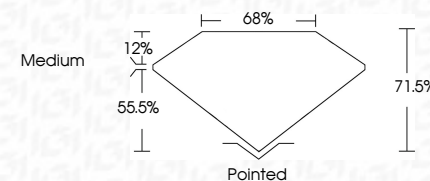
## LABORATORY GROWN DIAMOND REPORT



October 13, 2025	
IGI Report Number	LG742548469
Description	LABORATORY GROWN DIAMOND
Shape and Cutting Style	PRINCESS CUT
Measurements	5.60 X 5.50 X 3.93 MM

## GRADING RESULTS

Carat Weight	1.08 CARAT
Color Grade	D
Clarity Grade	VS 1



### ADDITIONAL GRADING INFORMATION

Polish	EXCELLENT
Symmetry	EXCELLENT
Fluorescence	NONE
Inscription(s)	 LG742548469
<p>Comments: This Laboratory Grown Diamond was created by Chemical Vapor Deposition (CVD) growth process.</p> <p>Type IIa</p>	



© IGI 2020, International Gemological Institute

FD - 10 20

**www.igi.org**

THIS DOCUMENT WAS PRODUCED WITH THE FOLLOWING SECURITY MEASURES: SPECIAL DOCUMENT PAPER, INK SCREENS, WATERMARK, BACKGROUND DESIGNS, HOLOGRAM AND OTHER SECURITY FEATURES NOT LISTED AND DO EXCEED DOCUMENT SECURITY INDUSTRY GUIDELINE

October 13, 2025  
GI Report No LG742548469

<p> <b>GI Report No</b> LG70248469  <b>PRECINCESS CUT</b>  <b>5.60 X 5.50 X 3.33 MM</b> </p>	<p> <b>Carat Weight</b>  <b>Color Grade</b>  <b>Clarity Grade</b>  <b>Depth</b>  <b>Table</b>  <b>Girdle</b>  <b>Culet</b>  <b>Polish</b>  <b>Symmetry</b>  <b>Fluorescence</b> </p>	<p> <b>1.08 CARAT</b>  <b>D</b>  <b>VS 1</b>  <b>71.6%</b>  <b>68%</b>  <b>Medium</b>  <b>Polished</b>  <b>EXCELLENT</b>  <b>EXCELLENT</b>  <b>NONE</b>  <b>None</b> </p>
--	--	---

**Comments:**  
This Laboratory Grown Diamond was created by Chemical Vapor Deposition (CVD) growth process.