



**ELECTRONIC COPY**

LG742548145  
Report verification at igi.org



October 15, 2025

IGI Report Number **LG742548145**

Description **LABORATORY GROWN DIAMOND**

Shape and Cutting Style **ROUND BRILLIANT**

Measurements **8.88 - 8.93 X 5.53 MM**

**GRADING RESULTS**

Carat Weight **2.72 CARATS**

Color Grade **E**

Clarity Grade **VS 1**

Cut Grade **IDEAL**

October 15, 2025

IGI Report Number **LG742548145**

Description **LABORATORY GROWN DIAMOND**

Shape and Cutting Style **ROUND BRILLIANT**

Measurements **8.88 - 8.93 X 5.53 MM**

**GRADING RESULTS**

Carat Weight **2.72 CARATS**

Color Grade **E**

Clarity Grade **VS 1**

Cut Grade **IDEAL**

**ADDITIONAL GRADING INFORMATION**

Polish **EXCELLENT**

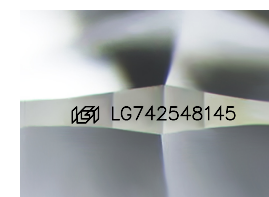
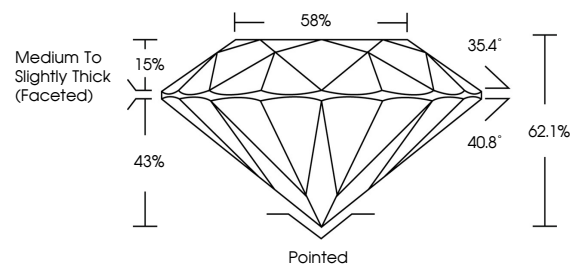
Symmetry **EXCELLENT**

Fluorescence **NONE**

Inscription(s) **IGI LG742548145**

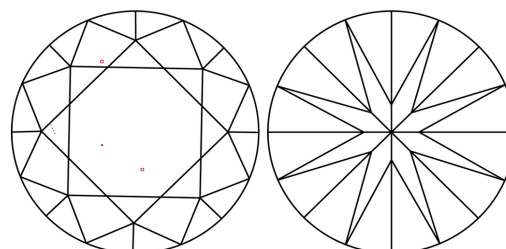
Comments: HEARTS & ARROWS  
This Laboratory Grown Diamond was created by  
Chemical Vapor Deposition (CVD) growth process.  
Type IIa

**PROPORTIONS**



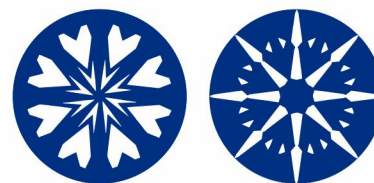
Sample Image Used

**CLARITY CHARACTERISTICS**



**KEY TO SYMBOLS**

Red symbols indicate internal characteristics.  
Green symbols indicate external characteristics.

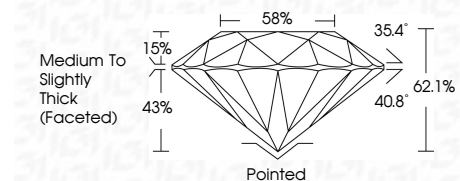


**COLOR**

D E F G H I J Faint Very Light Light

**CLARITY**

FL	IF	VS <sup>1-2</sup>	VS <sup>1-2</sup>	SI <sup>1-2</sup>	I <sup>1-3</sup>
Flawless	Internally Flawless	Very Very Slightly Included	Very Slightly Included	Slightly Included	Included



**ADDITIONAL GRADING INFORMATION**

Polish **EXCELLENT**

Symmetry **EXCELLENT**

Fluorescence **NONE**

Inscription(s) **IGI LG742548145**

Comments: HEARTS & ARROWS  
This Laboratory Grown Diamond was created by  
Chemical Vapor Deposition (CVD) growth process.  
Type IIa



October 15, 2025  
IGI Report No LG742548145  
ROUND BRILLIANT

8.88 - 8.93 X 5.53 MM  
2.72 CARATS  
E  
VS 1  
IDEAL  
62.1%  
58%  
Medium To Slightly Thick (Faceted)

Pointed  
EXCELLENT  
EXCELLENT  
NONE  
IGI LG742548145

Culet  
Polish  
Symmetry  
Fluorescence  
Inscription(s)

Comments:  
Hearts & Arrows  
This Laboratory Grown Diamond was  
created by Chemical Vapor Deposition  
(CVD) growth process.  
Type IIa