



October 15, 2025
IGI Report Number LG742545526
CUSHION MODIFIED BRILLIANT
LABORATORY GROWN DIAMOND
6.02 X 4.54 X 2.90 MM
 Carat Weight **0.59 CARAT**
 Color Grade **D**
 Clarity Grade **VVS 2**
 Polish **EXCELLENT**
 Symmetry **EXCELLENT**
 Fluorescence **NONE**
 Inscription(s) **IGI LG742545526**

LABORATORY GROWN DIAMOND REPORT

October 15, 2025
 IGI Report Number **LG742545526**
 Description **LABORATORY GROWN DIAMOND**
 Shape and Cutting Style **CUSHION MODIFIED BRILLIANT**
 Measurements **6.02 X 4.54 X 2.90 MM**

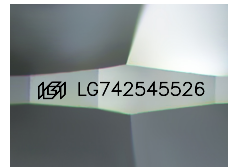
GRADING RESULTS

Carat Weight **0.59 CARAT**
 Color Grade **D**
 Clarity Grade **VVS 2**

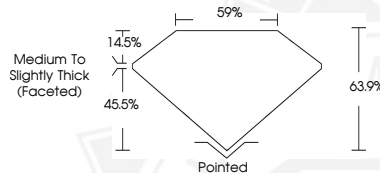
ADDITIONAL GRADING INFORMATION

Polish **EXCELLENT**
 Symmetry **EXCELLENT**
 Fluorescence **NONE**
 Inscription(s) **IGI LG742545526**

Comments: This Laboratory Grown Diamond was created by
 Chemical Vapor Deposition (CVD) growth process.
 Type IIa



Sample Image Used



October 15, 2025
IGI Report Number LG742545526
CUSHION MODIFIED BRILLIANT
LABORATORY GROWN DIAMOND
6.02 X 4.54 X 2.90 MM
 Carat Weight **0.59 CARAT**
 Color Grade **D**
 Clarity Grade **VVS 2**
 Polish **EXCELLENT**
 Symmetry **EXCELLENT**
 Fluorescence **NONE**
 Inscription(s) **IGI LG742545526**

Comments: This Laboratory Grown
 Diamond was created by
 Chemical Vapor Deposition (CVD)
 growth process. Type IIa



THIS DOCUMENT WAS PRODUCED WITH THE FOLLOWING SECURITY MEASURES: SPECIAL DOCUMENT PAPER, INK SCREENS, WATERMARK, BACKGROUND DESIGNS, HOLOGRAM AND OTHER SECURITY FEATURES NOT LISTED AND DO EXCEED DOCUMENT SECURITY INDUSTRY GUIDELINES.