



October 14, 2025  
**IGI Report Number** LG742545471  
**ROUND BRILLIANT**  
**LABORATORY GROWN DIAMOND**  
**4.66 - 4.70 X 2.88 MM**  
 Carat Weight **0.39 CARAT**  
 Color Grade **E**  
 Clarity Grade **I.F.**  
 Cut Grade **IDEAL**  
 Polish **EXCELLENT**  
 Symmetry **EXCELLENT**  
 Fluorescence **NONE**  
 Inscription(s) **IGI LG742545471**

**LABORATORY GROWN DIAMOND REPORT**

October 14, 2025  
 IGI Report Number **LG742545471**  
 Description **LABORATORY GROWN DIAMOND**  
 Shape and Cutting Style **ROUND BRILLIANT**  
 Measurements **4.66 - 4.70 X 2.88 MM**

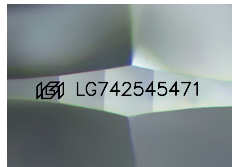
**GRADING RESULTS**

Carat Weight **0.39 CARAT**  
 Color Grade **E**  
 Clarity Grade **INTERNALLY FLAWLESS**  
 Cut Grade **IDEAL**

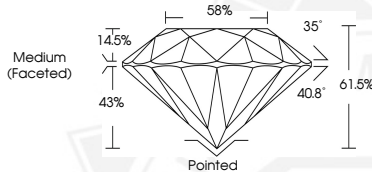
**ADDITIONAL GRADING INFORMATION**

Polish **EXCELLENT**  
 Symmetry **EXCELLENT**  
 Fluorescence **NONE**  
 Inscription(s) **IGI LG742545471**

Comments: This Laboratory Grown Diamond was created by Chemical Vapor Deposition (CVD) growth process. Type IIa



Sample Image Used



October 14, 2025  
**IGI Report Number** LG742545471  
**ROUND BRILLIANT**  
**LABORATORY GROWN DIAMOND**  
**4.66 - 4.70 X 2.88 MM**  
 Carat Weight **0.39 CARAT**  
 Color Grade **E**  
 Clarity Grade **I.F.**  
 Cut Grade **IDEAL**  
 Polish **EXCELLENT**  
 Symmetry **EXCELLENT**  
 Fluorescence **NONE**  
 Inscription(s) **IGI LG742545471**

Comments: This Laboratory Grown Diamond was created by Chemical Vapor Deposition (CVD) growth process. Type IIa



THIS DOCUMENT WAS PRODUCED WITH THE FOLLOWING SECURITY MEASURES: SPECIAL DOCUMENT PAPER, INK SCREENS, WATERMARK, BACKGROUND DESIGNS, HOLOGRAM AND OTHER SECURITY FEATURES NOT LISTED AND DO EXCEED DOCUMENT SECURITY INDUSTRY GUIDELINES.