

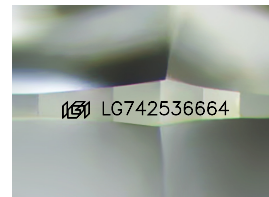
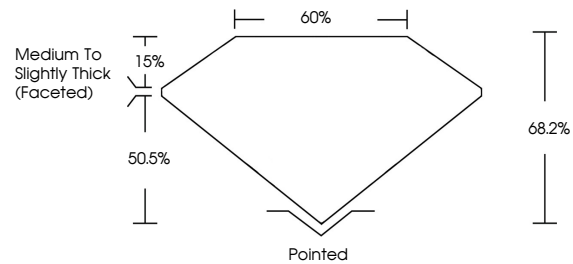


**INTERNATIONAL
GEMOLOGICAL
INSTITUTE**

ELECTRONIC COPY

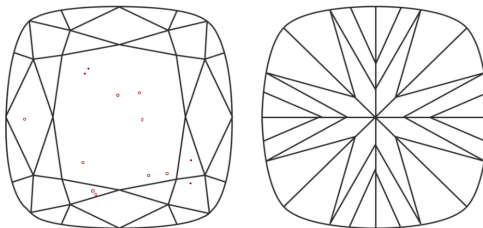
LG742536664
Report verification at igi.org

PROPORTIONS



Sample Image Used

CLARITY CHARACTERISTICS



KEY TO SYMBOLS

Red symbols indicate internal characteristics.
Green symbols indicate external characteristics.

COLOR

D E F G H I J Faint Very Light Light

CLARITY

FL IF VWS¹⁻² VS¹⁻² SI¹⁻² I¹⁻³

Flawless	Internally Flawless	Very Very Slightly Included	Very Slightly Included	Slightly Included	Included
----------	------------------------	--------------------------------	---------------------------	----------------------	----------



© IGI 2020, International Gemological Institute

FD - 10 20

www.igi.org

THIS DOCUMENT WAS PRODUCED WITH THE FOLLOWING SECURITY MEASURES: SPECIAL DOCUMENT PAPER, INK SCREENS, WATERMARK, BACKGROUND DESIGNS, HOLOGRAM AND OTHER SECURITY FEATURES NOT LISTED AND DO EXCEED DOCUMENT SECURITY INDUSTRY GUIDELINES.

LABORATORY GROWN DIAMOND REPORT



October 15, 2025

IGI Report Number **LG742536664**

Description	LABORATORY GROWN DIAMOND
-------------	--------------------------

Shape and Cutting Style **SQUARE CUSHION MODIFIED
BRILLIANT**

Measurements 11.28 X 11.23 X 7.66 MM

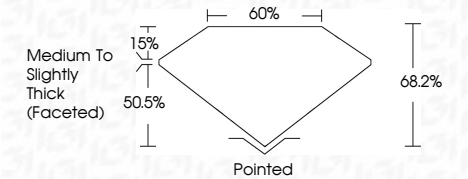
GRADING RESULTS

Carat Weight **7.01 CARATS**

Color Grade **E**

Clarity Grade VS 2

Cut Grade	EXCELLENT
-----------	-----------



ADDITIONAL GRADING INFORMATION

Polish **EXCELLENT**Symmetry **EXCELLENT**Fluorescence **NONE**Inscription(s) LG742536664

Comments: This Laboratory Grown Diamond was created by Chemical Vapor Deposition (CVD) growth process.
Type IIa



IGI

October 15, 2025	IGI Report No. IGI42836644		SQUARE CUSHION MODIFIED BRILLIANT	
11.28 X 11.28 X 7.65 MM	Color Weight	7.01 CARATS	Vs 2	EXCELLENT
	Carat Grade		68.2%	60%
	Clarity Grade		Medium to Slightly Thick (Faced)	Polished
	Cut Grade			EXCELLENT
	Depth			EXCELLENT
	Table			NONE
	Girdle			IGI LG742836644
	Culet			
	Polish			
	Symmetry			
	Fluorescence			
	Inclusions (s)			
<p>Comments: This Laboratory Grown Diamond was created by Chemical Vapor Deposition (CVD) growth process.</p> <p>Type IId</p>				