



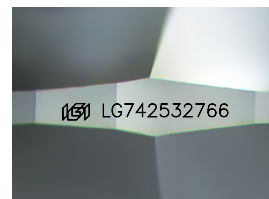
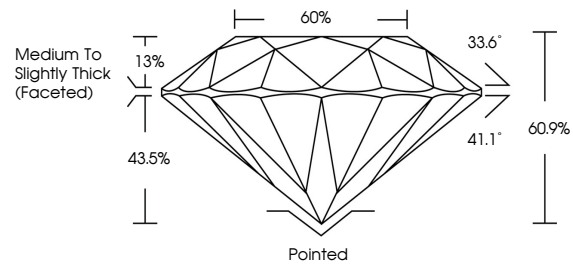
**INTERNATIONAL
GEMOLOGICAL
INSTITUTE**

ELECTRONIC COPY

LABORATORY GROWN DIAMOND REPORT

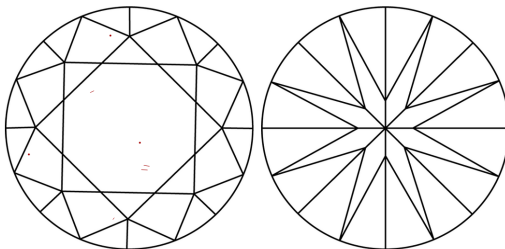
LG742532766
Report verification at igi.org

PROPORTIONS



Sample Image Used

CLARITY CHARACTERISTICS



KEY TO SYMBOLS

Red symbols indicate internal characteristics.
Green symbols indicate external characteristics.

COLOR

D E F G H I J Faint Very Light Light

CLARITY

FL IF WS¹⁻² VS¹⁻² SI¹⁻² I¹⁻³

Flawless	Internally Flawless	Very Very Slightly Included	Very Slightly Included	Slightly Included	Included
----------	---------------------	-----------------------------	------------------------	-------------------	----------



October 11, 2025

IGI Report Number **LG742532766**

Description	LABORATORY GROWN DIAMOND
-------------	--------------------------

Shape and Cutting Style **ROUND BRILLIANT**

Measurements 9.25 - 9.33 X 5.65 MM

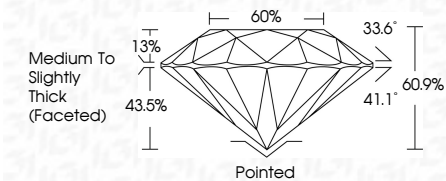
GRADING RESULTS

Carat Weight **3.00 CARATS**

Color Grade	E
-------------	---

Clarity Grade VS 1

Cut Grade **IDEAL**



ADDITIONAL GRADING INFORMATION

Polish **EXCELLENT**Symmetry **EXCELLENT**Fluorescence **NONE**Inscription(s) LG74253276

Comments: This Laboratory Grown Diamond was created by Chemical Vapor Deposition (CVD) growth process.
Type IIa



IG



© IGI 2020, International Gemological Institute

FD - 10 20

www.igi.org

THIS DOCUMENT WAS PRODUCED WITH THE FOLLOWING SECURITY MEASURES: SPECIAL DOCUMENT PAPER, INK SCREENS, WATERMARK, BACKGROUND DESIGNS, HOLOGRAM AND OTHER SECURITY FEATURES NOT LISTED AND DO EXCEED DOCUMENT SECURITY INDUSTRY GUIDELINES

October 11, 2025
IGI Report No LG742532766
ROUND BRILLIANT

9.25 - 9.33 X 5.65 MM	3.00 CARATS	
Carat Weight	E	
Color Grade	VS 1	Pointed
Clarity Grade	IDEAL	EXCELLENT
Cut Grade	60.9%	EXCEL
Depth	60%	NONE
Table	Medium to slightly Thick (faceted)	4mm 1.57 0.00274
Girdle		
Culet		
Polish		
Symmetry		
Fluorescence		
Measurements		

Comments:
This Laboratory Grown Diamond was created by Chemical Vapor Deposition (CVD) growth process.