



ELECTRONIC COPY

LG742528056
Report verification at igi.org



October 16, 2025

IGI Report Number **LG742528056**

Description **LABORATORY GROWN DIAMOND**

Shape and Cutting Style **EMERALD CUT**

Measurements **7.43 X 5.19 X 3.69 MM**

GRADING RESULTS

Carat Weight **1.41 CARAT**

Color Grade **FANCY INTENSE YELLOW**

Clarity Grade **VVS 2**

October 16, 2025
IGI Report Number **LG742528056**
Description **LABORATORY GROWN DIAMOND**
Shape and Cutting Style **EMERALD CUT**
Measurements **7.43 X 5.19 X 3.69 MM**

GRADING RESULTS

Carat Weight **1.41 CARAT**

Color Grade **FANCY INTENSE YELLOW**

Clarity Grade **VVS 2**

ADDITIONAL GRADING INFORMATION

Polish **EXCELLENT**

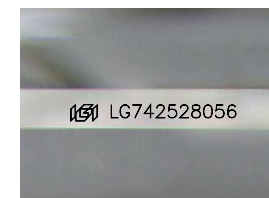
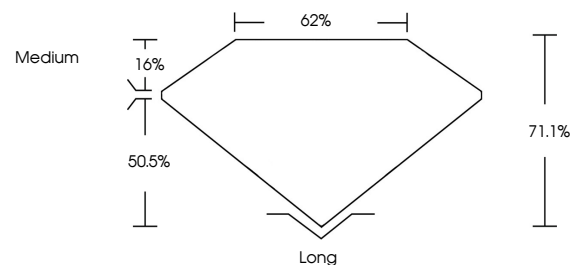
Symmetry **EXCELLENT**

Fluorescence **NONE**

Inscription(s) **LG742528056**

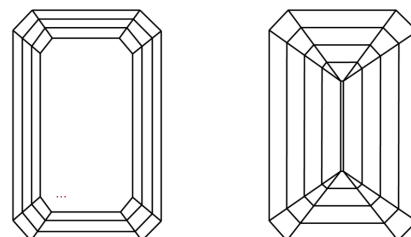
Comments: This Laboratory Grown Diamond was created by Chemical Vapor Deposition (CVD) growth process.
Indications of post-growth treatment.

PROPORTIONS



Sample Image Used

CLARITY CHARACTERISTICS



KEY TO SYMBOLS

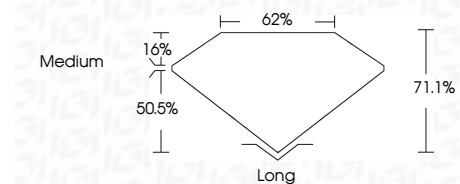
Red symbols indicate internal characteristics.
Green symbols indicate external characteristics.

COLOR

D E F G H I J Faint Very Light Light

CLARITY

FL	IF	VVS ¹⁻²	VS ¹⁻²	SI ¹⁻²	I ¹⁻³
Flawless	Internally Flawless	Very Very Slightly Included	Very Slightly Included	Slightly Included	Included



ADDITIONAL GRADING INFORMATION

Polish **EXCELLENT**

Symmetry **EXCELLENT**

Fluorescence **NONE**

Inscription(s) **LG742528056**

Comments: This Laboratory Grown Diamond was created by Chemical Vapor Deposition (CVD) growth process.
Indications of post-growth treatment.



IGI



October 16, 2025
IGI Report No **LG742528056**
EMERALD CUT

1.41 CARAT
Carat Weight
FANCY INTENSE YELLOW
Color Grade

VVS 2
Clarity Grade

71.1%
Depth

62%
Table

Medium
Girdle

Long
Culet

EXCELLENT
Polish

EXCELLENT
Symmetry

NONE
Fluorescence

IGI LG742528056
Inscription(s)

Comments: This Laboratory Grown Diamond was created by Chemical Vapor Deposition (CVD) growth process.
Indications of post-growth treatment.