



**ELECTRONIC COPY**

## LABORATORY GROWN DIAMOND REPORT

October 13, 2025	
IGI Report Number	LG742528016
Description	LABORATORY GROWN DIAMOND
Shape and Cutting Style	CUT CORNERED RECTANGULAR MODIFIED BRILLIANT
Measurements	10.19 X 6.96 X 4.67 MM

## GRADING RESULTS

Carat Weight	2.82 CARATS
Color Grade	E
Clarity Grade	VVS 2

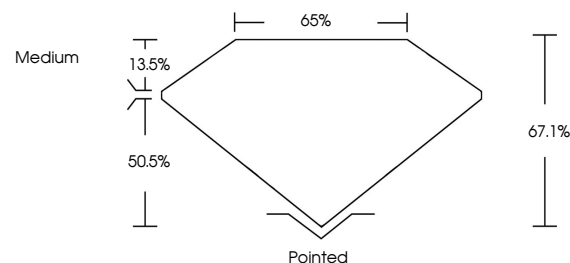
### ADDITIONAL GRADING INFORMATION

Polish	EXCELLENT
Symmetry	EXCELLENT
Fluorescence	NONE
Inscription(s)	 LG742528016

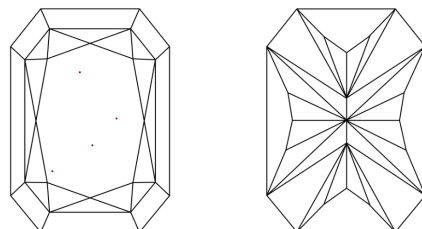
Comments: This Laboratory Grown Diamond was created by Chemical Vapor Deposition (CVD) growth process.  
Type IIa

LG742528016  
Report verification at [lgi.org](https://lgi.org)

## PROPORTIONS

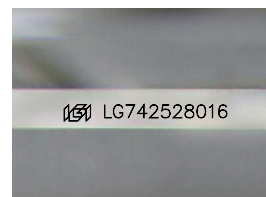


## CLARITY CHARACTERISTICS



### KEY TO SYMBOLS

Red symbols indicate internal characteristics.  
Green symbols indicate external characteristics.



Sample Image Used

## COLOR

D E F G H I J Faint Very Light Light

## CLARITY

FL	IF	VVS <sup>1-2</sup>	VS <sup>1-2</sup>	SI <sup>1-2</sup>	I <sup>1-3</sup>
Flawless	Internally Flawless	Very Very Slightly Included	Very Slightly Included	Slightly Included	Included

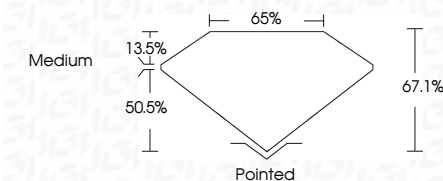
## LABORATORY GROWN DIAMOND REPORT



October 13, 2025	
IGI Report Number	LG742528016
Description	LABORATORY GROWN DIAMOND
Shape and Cutting Style	CUT CORNERED RECTANGULAR MODIFIED BRILLIANT
Measurements	10.19 X 6.96 X 4.67 MM

## GRADING RESULTS

Carat Weight	2.82 CARATS
Color Grade	E
Clarity Grade	VS2



### ADDITIONAL GRADING INFORMATION

Polish	EXCELLENT
Symmetry	EXCELLENT
Fluorescence	NONE
Inscription(s)	(修) LG742528016
Comments: This Laboratory Grown Diamond was created by Chemical Vapor Deposition (CVD) growth process.	
Type IIa	



© IGI 2020, International Gemological Institute

FD - 10 20

**www.igi.org**

THIS DOCUMENT WAS PRODUCED WITH THE FOLLOWING SECURITY MEASURES: SPECIAL DOCUMENT PAPER, INK SCREENS, WATERMARK, BACKGROUND DESIGNS, HOLOGRAM AND OTHER SECURITY FEATURES NOT LISTED AND DO EXCEED DOCUMENT SECURITY INDUSTRY GUIDELINE

October 13, 2025	GI Report No LG74629016	2.82 CARATS	E
CLUTTERED RECT. MODIFIED BRILLIANT		VVS 2	67.1%
		65%	Medium
10.19 X 6.96 X 4.57 MM			
Color Weight	Color Grade	Clarity Grade	Depth
			table
			Grade
			Quiet
			Polish
			Symmetry
			Fluorescence
			inscriptions(s)
			None
			1691 LG74629016

Comments: Very Fine Growth Pattern was created by Chemical Vapor Deposition (CVD) growth process.

Type IIA