



**ELECTRONIC COPY**

## LABORATORY GROWN DIAMOND REPORT

|                         |                          |
|-------------------------|--------------------------|
| October 31, 2025        |                          |
| IGI Report Number       | LG742519571              |
| Description             | LABORATORY GROWN DIAMOND |
| Shape and Cutting Style | ROUND BRILLIANT          |
| Measurements            | 8.24 - 8.28 X 4.81 MM    |

## GRADING RESULTS

|               |             |
|---------------|-------------|
| Carat Weight  | 2.00 CARATS |
| Color Grade   | E           |
| Clarity Grade | VS 1        |
| Cut Grade     | EXCELLENT   |

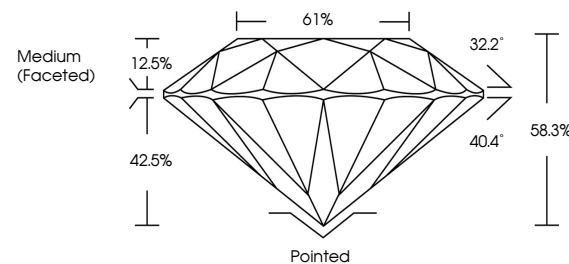
### ADDITIONAL GRADING INFORMATION

|                |   |
|----------------|---|
| Polish         | EXCELLENT   |
| Symmetry       | EXCELLENT   |
| Fluorescence   | NONE  |
| Inscription(s) |  LG742519571 |

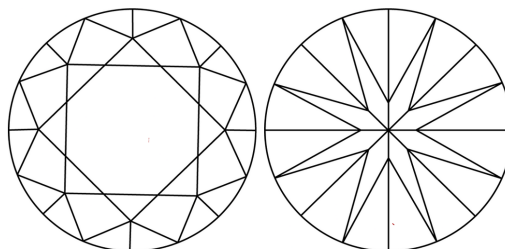
Comments: This Laboratory Grown Diamond was created by Chemical Vapor Deposition (CVD) growth process.  
Type IIa

LG742519571  
Report verification at [igi.org](https://igi.org)

## PROPORTIONS

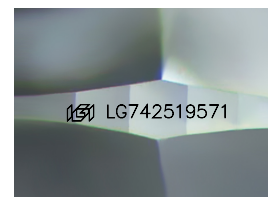


## CLARITY CHARACTERISTICS



## KEY TO SYMBOLS

Red symbols indicate internal characteristics.  
Green symbols indicate external characteristics.



Sample Image Used

## COLOR

D E F G H I J Faint Very Light Light

## CLARITY

| FL       | IF                  | VVS <sup>1-2</sup>          | VS <sup>1-2</sup>      | SI <sup>1-2</sup> | I <sup>1-3</sup> |
|----------|---------------------|-----------------------------|------------------------|-------------------|------------------|
| Flawless | Internally Flawless | Very Very Slightly Included | Very Slightly Included | Slightly Included | Included         |

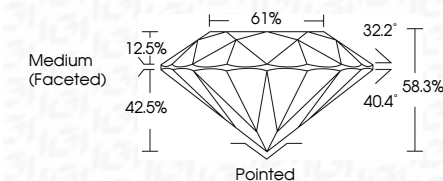
## LABORATORY GROWN DIAMOND REPORT



|                         |                          |
|-------------------------|--------------------------|
| October 31, 2025        |                          |
| IGI Report Number       | LG742519571              |
| Description             | LABORATORY GROWN DIAMOND |
| Shape and Cutting Style | ROUND BRILLIANT          |
| Measurements            | 8.24 - 8.28 X 4.81 MM    |

## GRADING RESULTS

|               |             |
|---------------|-------------|
| Carat Weight  | 2.00 CARATS |
| Color Grade   | E           |
| Clarity Grade | VS 1        |
| Cut Grade     | EXCELLENT   |



### ADDITIONAL GRADING INFORMATION

|   |                           |
|---|---------------------------|
| Polish  | EXCELLENT                 |
| Symmetry  | EXCELLENT                 |
| Fluorescence  | NONE                      |
| Inscription(s)  | <del>LG</del> LG742519571 |
| <p>Comments: This Laboratory Grown Diamond was created by Chemical Vapor Deposition (CVD) growth process.</p> <p>Type IIa</p> |                           |



© IGI 2020, International Gemological Institute

FD - 10 20



THIS DOCUMENT WAS PRODUCED WITH THE FOLLOWING SECURITY MEASURES: SPECIAL DOCUMENT PAPER, INK SCREENS, WATERMARK, BACKGROUND DESIGNS, HOLOGRAM AND OTHER SECURITY FEATURES NOT LISTED AND DO EXCEED DOCUMENT SECURITY INDUSTRY GUIDELINES

**www.igi.org**

October 31, 2025  
 CGI Report No LG742519571  
 BOUND BRILLIANT

|                 |                       |             |             |               |           |       |       |                  |         |           |           |              |                  |
|-----------------|-----------------------|-------------|-------------|---------------|-----------|-------|-------|------------------|---------|-----------|-----------|--------------|------------------|
| ROUND BRILLIANT | 0.24 - 0.29 X 4.81 MM | 2.00 CARATS | E           | VS 1          | EXCELLENT | 68.3% | 61%   | Medium (Faceted) | Pointed | EXCELLENT | EXCELLENT | NONE         | 661 (27.05% SET) |
|                 |                       |             | Color Grade | Clarity Grade | Cut Grade | Depth | Table | Girdle           | Culet   | Polish    | Symmetry  | Fluorescence |                  |

**Comments:**  
This Laboratory Grown Diamond was created by Chemical Vapor Deposition (CVD) growth process.