



ELECTRONIC COPY

LG742515200
Report verification at igi.org



October 28, 2025

IGI Report Number **LG742515200**

Description **LABORATORY GROWN DIAMOND**

Shape and Cutting Style **EMERALD CUT**

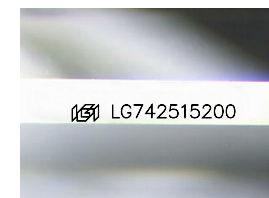
Measurements **9.66 X 6.24 X 4.24 MM**

GRADING RESULTS

Carat Weight **2.57 CARATS**

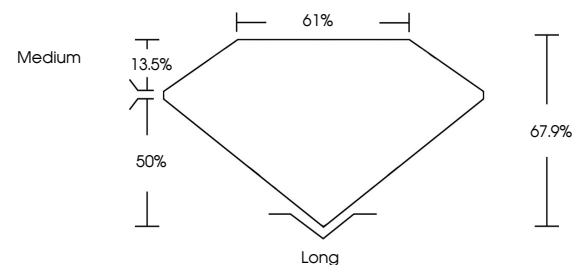
Color Grade **E**

Clarity Grade **VS 1**

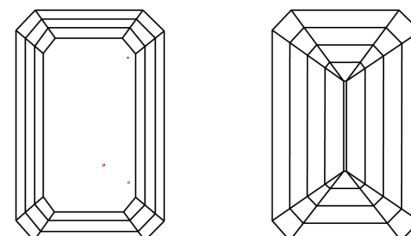


Sample Image Used

PROPORTIONS



CLARITY CHARACTERISTICS



KEY TO SYMBOLS

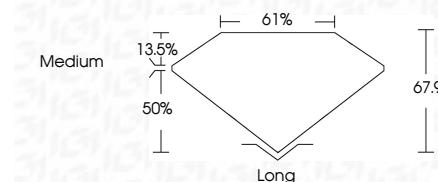
Red symbols indicate internal characteristics.
Green symbols indicate external characteristics.

COLOR

D E F G H I J Faint Very Light Light

CLARITY

FL	IF	VS ¹⁻²	VS ¹⁻²	SI ¹⁻²	I ¹⁻³
Flawless	Internally Flawless	Very Very Slightly Included	Very Slightly Included	Slightly Included	Included



ADDITIONAL GRADING INFORMATION

Polish **EXCELLENT**

Symmetry **EXCELLENT**

Fluorescence **NONE**

Inscription(s) **IGI LG742515200**

Comments: This Laboratory Grown Diamond was created by Chemical Vapor Deposition (CVD) growth process. Type IIa



IGI



October 28, 2025
IGI Report No LG742515200
EMERALD CUT

2.57 CARATS
E

9.66 X 6.24 X 4.24 MM
Carat Weight
Color Grade
Clarity Grade
Depth
Table
Girdle
Medium

VS 1
67.9%
61%
Medium

Long
EXCELLENT
EXCELLENT
NONE
IGI LG742515200

Comments: This Laboratory Grown Diamond was created by Chemical Vapor Deposition (CVD) growth process. Type IIa