



ELECTRONIC COPY

LABORATORY GROWN DIAMOND REPORT

October 17, 2025
IGI Report Number LG742514993
Description LABORATORY GROWN DIAMOND
Shape and Cutting Style CUT CORNERED RECTANGULAR MODIFIED BRILLIANT
Measurements 11.30 X 7.24 X 4.76 MM

GRADING RESULTS

Carat Weight 3.54 CARATS
Color Grade D
Clarity Grade VS 1

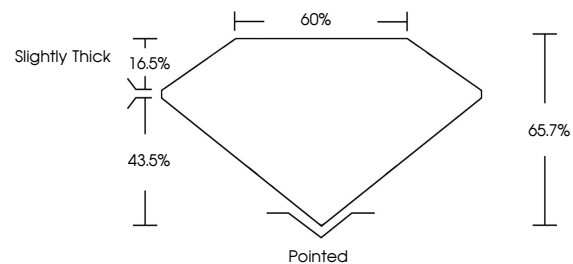
ADDITIONAL GRADING INFORMATION

Polish EXCELLENT
Symmetry EXCELLENT
Fluorescence NONE

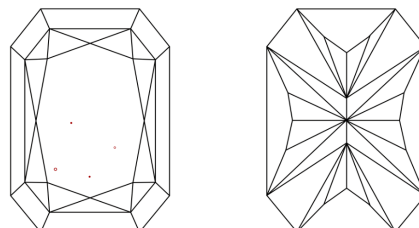
Inscription(s) LG742514993

Comments: This Laboratory Grown Diamond was created by Chemical Vapor Deposition (CVD) growth process.
Type IIa

PROPORTIONS

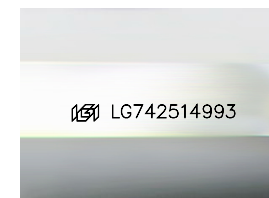


CLARITY CHARACTERISTICS



KEY TO SYMBOLS

Red symbols indicate internal characteristics.
Green symbols indicate external characteristics.



Sample Image Used

COLOR

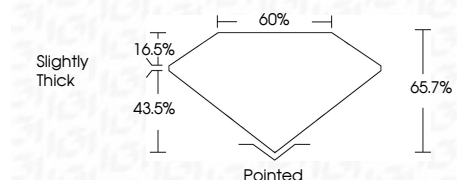
D E F G H I J Faint Very Light Light

CLARITY

FL IF VS¹⁻² VS¹⁻² SI¹⁻² I¹⁻³
Flawless Internally Flawless Very Very Slightly Included Very Slightly Included Slightly Included Included



October 17, 2025
IGI Report Number LG742514993
Description LABORATORY GROWN DIAMOND
Shape and Cutting Style CUT CORNERED RECTANGULAR MODIFIED BRILLIANT
Measurements 11.30 X 7.24 X 4.76 MM
GRADING RESULTS
Carat Weight 3.54 CARATS
Color Grade D
Clarity Grade VS 1



ADDITIONAL GRADING INFORMATION

Polish EXCELLENT
Symmetry EXCELLENT
Fluorescence NONE
Inscription(s) LG742514993
Comments: This Laboratory Grown Diamond was created by Chemical Vapor Deposition (CVD) growth process.
Type IIa



IGI



October 17, 2025
IGI Report No LG742514993
CUT CORNERED RECT. MODIFIED BRILLIANT
11.30 X 7.24 X 4.76 MM
3.54 CARATS
D
VS 1
65.7%
43.5%
Slightly Thick
Pointed
EXCELLENT
EXCELLENT
NONE
Inscription(s) LG742514993

Comments: This Laboratory Grown Diamond was created by Chemical Vapor Deposition (CVD) growth process.
Type IIa