



**ELECTRONIC COPY**

LG742508271  
Report verification at igi.org



October 15, 2025  
IGI Report Number **LG742508271**  
Description **LABORATORY GROWN DIAMOND**  
Shape and Cutting Style **RECTANGULAR CUSHION MIXED CUT**  
Measurements **7.18 X 4.53 X 3.16 MM**  
**GRADING RESULTS**  
Carat Weight **1.14 CARAT**  
Color Grade **D**  
Clarity Grade **VS 1**

**LABORATORY GROWN DIAMOND REPORT**

October 15, 2025  
IGI Report Number **LG742508271**  
Description **LABORATORY GROWN DIAMOND**  
Shape and Cutting Style **RECTANGULAR CUSHION MIXED CUT**  
Measurements **7.18 X 4.53 X 3.16 MM**

**GRADING RESULTS**

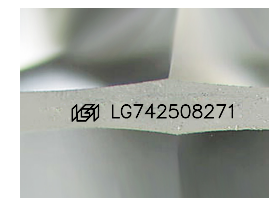
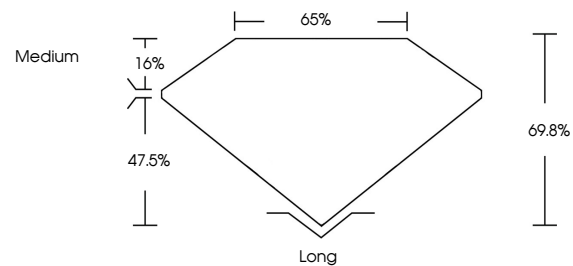
Carat Weight **1.14 CARAT**  
Color Grade **D**  
Clarity Grade **VS 1**

**ADDITIONAL GRADING INFORMATION**

Polish **EXCELLENT**  
Symmetry **EXCELLENT**  
Fluorescence **NONE**  
Inscription(s) **IGI LG742508271**

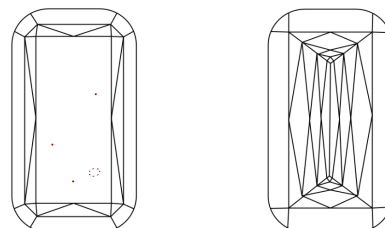
Comments: This Laboratory Grown Diamond was created by Chemical Vapor Deposition (CVD) growth process.  
Type IIa

**PROPORTIONS**



Sample Image Used

**CLARITY CHARACTERISTICS**



**KEY TO SYMBOLS**

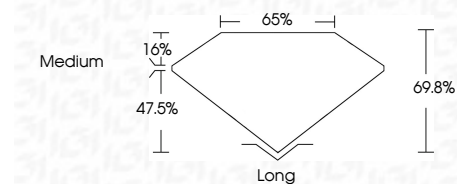
Red symbols indicate internal characteristics.  
Green symbols indicate external characteristics.

**COLOR**

D E F G H I J Faint Very Light Light

**CLARITY**

FL	IF	VS <sup>1-2</sup>	VS <sup>1-2</sup>	SI <sup>1-2</sup>	I <sup>1-3</sup>
Flawless	Internally Flawless	Very Very Slightly Included	Very Slightly Included	Slightly Included	Included



**ADDITIONAL GRADING INFORMATION**

Polish **EXCELLENT**  
Symmetry **EXCELLENT**  
Fluorescence **NONE**  
Inscription(s) **IGI LG742508271**  
Comments: This Laboratory Grown Diamond was created by Chemical Vapor Deposition (CVD) growth process.  
Type IIa



**IGI**



October 15, 2025  
IGI Report No **LG742508271**  
**RECTANGULAR CUSHION MIXED CUT**  
7.18 X 4.53 X 3.16 MM  
1.14 CARAT  
D  
VS 1  
69.8%  
47.5%  
1.6%  
Medium  
Long  
EXCELLENT  
EXCELLENT  
NONE  
IGI LG742508271

Comments: This Laboratory Grown Diamond was created by Chemical Vapor Deposition (CVD) growth process.  
Type IIa