



**ELECTRONIC COPY**

LG741594153  
Report verification at igi.org



October 12, 2025

IGI Report Number **LG741594153**

Description **LABORATORY GROWN DIAMOND**

Shape and Cutting Style **ROUND BRILLIANT**

Measurements **11.67 - 11.76 X 7.03 MM**

**GRADING RESULTS**

Carat Weight **6.01 CARATS**

Color Grade **E**

Clarity Grade **VVS 2**

Cut Grade **VERY GOOD**

October 12, 2025  
IGI Report Number **LG741594153**  
Description **LABORATORY GROWN DIAMOND**  
Shape and Cutting Style **ROUND BRILLIANT**  
Measurements **11.67 - 11.76 X 7.03 MM**

**GRADING RESULTS**

Carat Weight **6.01 CARATS**

Color Grade **E**

Clarity Grade **VVS 2**

Cut Grade **VERY GOOD**

**ADDITIONAL GRADING INFORMATION**

Polish **EXCELLENT**

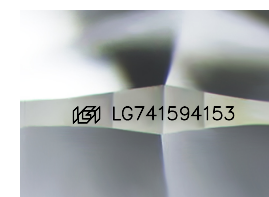
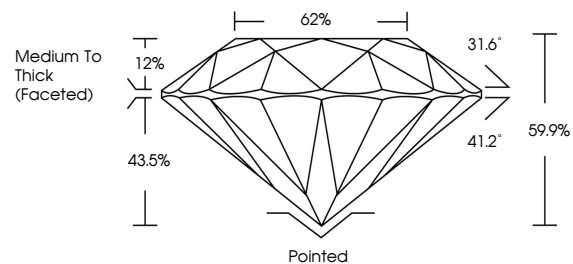
Symmetry **EXCELLENT**

Fluorescence **NONE**

Inscription(s) **LG741594153**

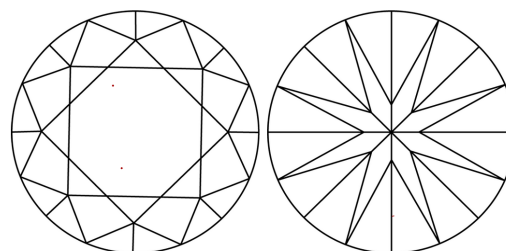
Comments: This Laboratory Grown Diamond was created by Chemical Vapor Deposition (CVD) growth process.  
Type IIa

**PROPORTIONS**



Sample Image Used

**CLARITY CHARACTERISTICS**



**KEY TO SYMBOLS**

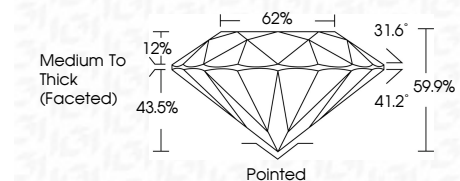
Red symbols indicate internal characteristics.  
Green symbols indicate external characteristics.

**COLOR**

D E F G H I J Faint Very Light Light

**CLARITY**

FL	IF	VVS <sup>1-2</sup>	VS <sup>1-2</sup>	SI <sup>1-2</sup>	I <sup>1-3</sup>
Flawless	Internally Flawless	Very Very Slightly Included	Very Slightly Included	Slightly Included	Included



**ADDITIONAL GRADING INFORMATION**

Polish **EXCELLENT**

Symmetry **EXCELLENT**

Fluorescence **NONE**

Inscription(s) **LG741594153**

Comments: This Laboratory Grown Diamond was created by Chemical Vapor Deposition (CVD) growth process.  
Type IIa



**IGI**



October 12, 2025	IGI Report No LG741594153	ROUND BRILLIANT	11.67 - 11.76 X 7.03 MM	6.01 CARATS	E	VVS 2	VERY GOOD	59.9%	62%	Medium To Thick (Faceted)	Pointed	EXCELLENT	EXCELLENT	NONE	LG741594153
Carat Weight	Color Grade	Clarity Grade	Cut Grade	Depth	Table	Girdle	Culet	Polish	Symmetry	Fluorescence	Inscription(s)	Comments: This Laboratory Grown Diamond was created by Chemical Vapor Deposition (CVD) growth process. Type IIa			