



**INTERNATIONAL
GEMOLOGICAL
INSTITUTE**

ELECTRONIC COPY

LABORATORY GROWN DIAMOND REPORT

LG741592274
Report verification at igi.org

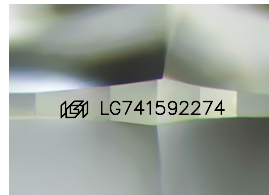
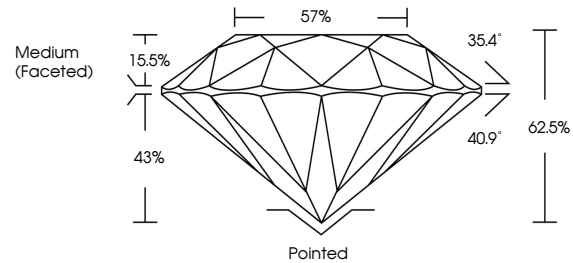
October 13, 2025	
IGI Report Number	LG741592274
Description	LABORATORY GROWN DIAMOND
Shape and Cutting Style	ROUND BRILLIANT
Measurements	9.25 - 9.28 X 5.79 MM
GRADING RESULTS	
Carat Weight	3.08 CARATS
Color Grade	E
Clarity Grade	VVS 2
Cut Grade	IDEAL

ADDITIONAL GRADING INFORMATION

Polish	EXCELLENT
Symmetry	EXCELLENT
Fluorescence	NONE
Inscription(s)	 LG741592274

Comments: This Laboratory Grown Diamond was created by Chemical Vapor Deposition (CVD) growth process.
Type IIa

PROPORTIONS



Sample Image Used

COLOR

D E F G H I J Faint Very Light Light

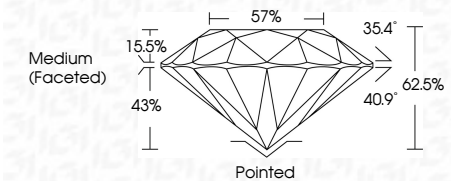
CLARITY

FL	IF	VVS ¹⁻²	VS ¹⁻²	SI ¹⁻²	I ¹⁻³
Flawless	Internally Flawless	Very Very Slightly Included	Very Slightly Included	Slightly Included	Included

LABORATORY GROWN DIAMOND REPORT



October 13, 2025	
IGI Report Number	LG741592274
Description	LABORATORY GROWN DIAMOND
Shape and Cutting Style	ROUND BRILLIANT
Measurements	9.25 - 9.28 X 5.79 MM
GRADING RESULTS	
Carat Weight	3.08 CARATS
Color Grade	E
Clarity Grade	VVS 2
Cut Grade	IDEAL



ADDITIONAL GRADING INFORMATION

Polish	EXCELLENT
Symmetry	EXCELLENT
Fluorescence	NONE
Inscription(s)	(15) LG74159227
<p>Comments: This Laboratory Grown Diamond was created by Chemical Vapor Deposition (CVD) growth process.</p> <p>Type IIa</p>	



IG



© IGI 2020, International Gemological Institute

FD - 10 20



THIS DOCUMENT WAS PRODUCED WITH THE FOLLOWING SECURITY MEASURES: SPECIAL DOCUMENT PAPER, INK SCREENS, WATERMARK BACKGROUND DESIGNS, HOLOGRAM AND OTHER SECURITY FEATURES NOT LISTED AND DO EXCEED DOCUMENT SECURITY INDUSTRY GUIDELINES

October 13, 2025
IGI Report No LG741592274
ROUND BRILLIANT

9.25 - 9.28 X 5.79 MM	3.08 CARATS	
Color Grade		
Clarity Grade	VVS 2	Pointed
Cut Grade	IDEAL	EXCELLENT
Depth	62.6%	EXCELLENT
Table	57%	NONE
Girdle	Medium (Faceted)	6411 (5741) 927274
Culet		
Polish		
Symmetry		
Fluorescence		
Inclusions(s)		

Comments:
This Laboratory Grown Diamond was created by Chemical Vapor Deposition (CVD) growth process.